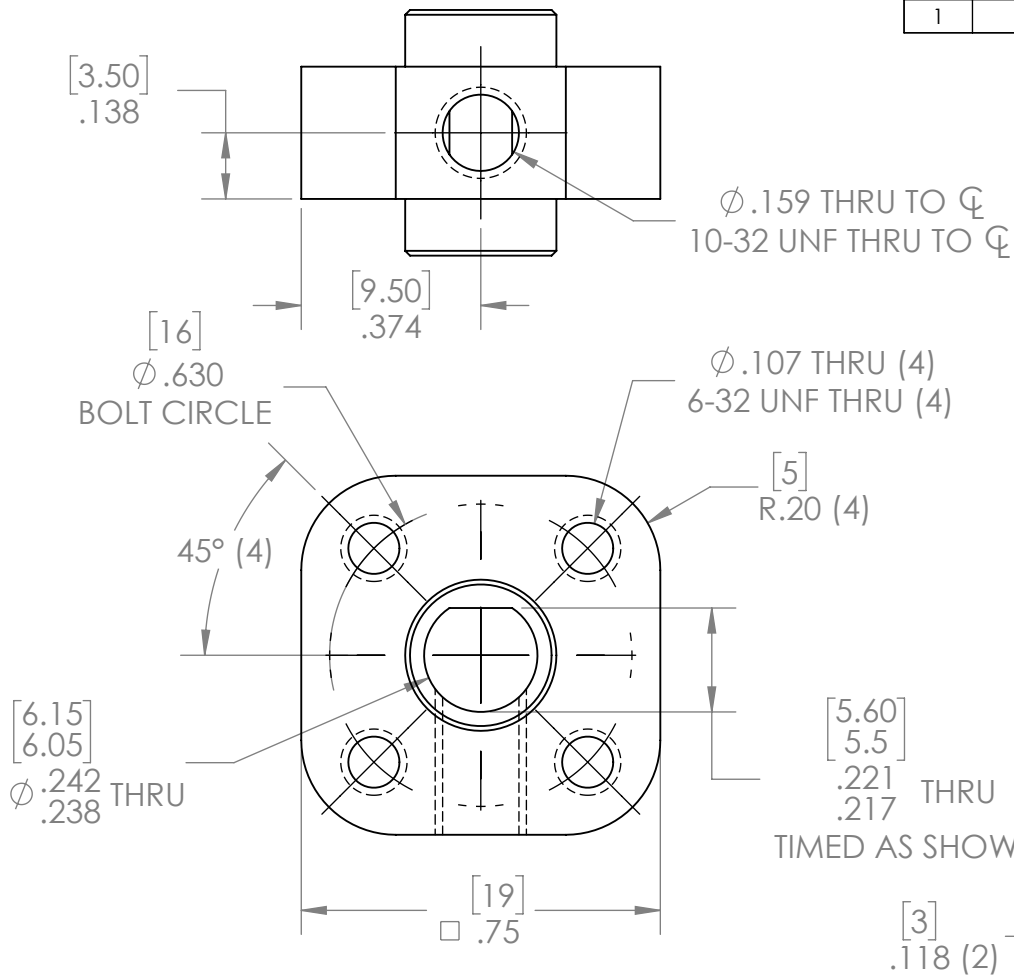
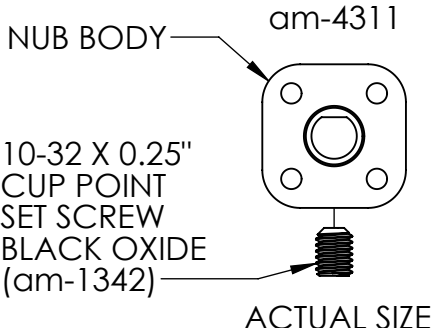
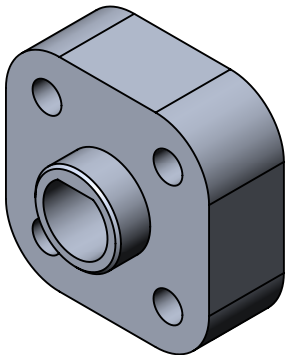


REVISION HISTORY			
REV.	DESCRIPTION	DATE	DRAWN BY
1	ORIGINAL PRINT	5/20/2020	N. LAWRENCE



*** SEE CAD FOR ADDITIONAL TOOLPATH INFO***



UNLESS OTHERWISE SPECIFIED:		COMMENTS:	
DIMENSIONS ARE IN INCHES		DUAL DIMENSIONS ARE IN MILLIMETERS.	
TOLERANCES:		BREAK ALL SHARP EDGES.	
FRACTIONAL	$\pm 1/16$	CHECKED	NAME KK
ANGULAR: MACH	$\pm 1^\circ$	ENG APPR.	DATE 6/10/20
ANGULAR: BEND	$\pm 5^\circ$	MFG APPR.	
ONE PLACE DECIMAL	± 0.1	Q.A.	
TWO PLACE DECIMAL	± 0.01		
THREE PLACE DECIMAL	± 0.005		
FOUR PLACE DECIMAL	± 0.0005		
MATERIAL	6061-T6 AL		
FINISH	DEBURRED SILVER ANNOXIDIZE		
DO NOT SCALE DRAWING			



TITLE:
 6mm D BORE
 DOUBLE BOSS HD NUB

SIZE	DWG. NO.	REV
A	am-4311	1
SCALE: 2.5:1		SHEET 1 OF 1