

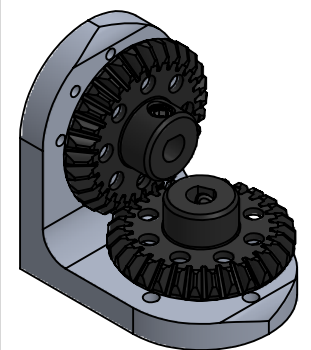
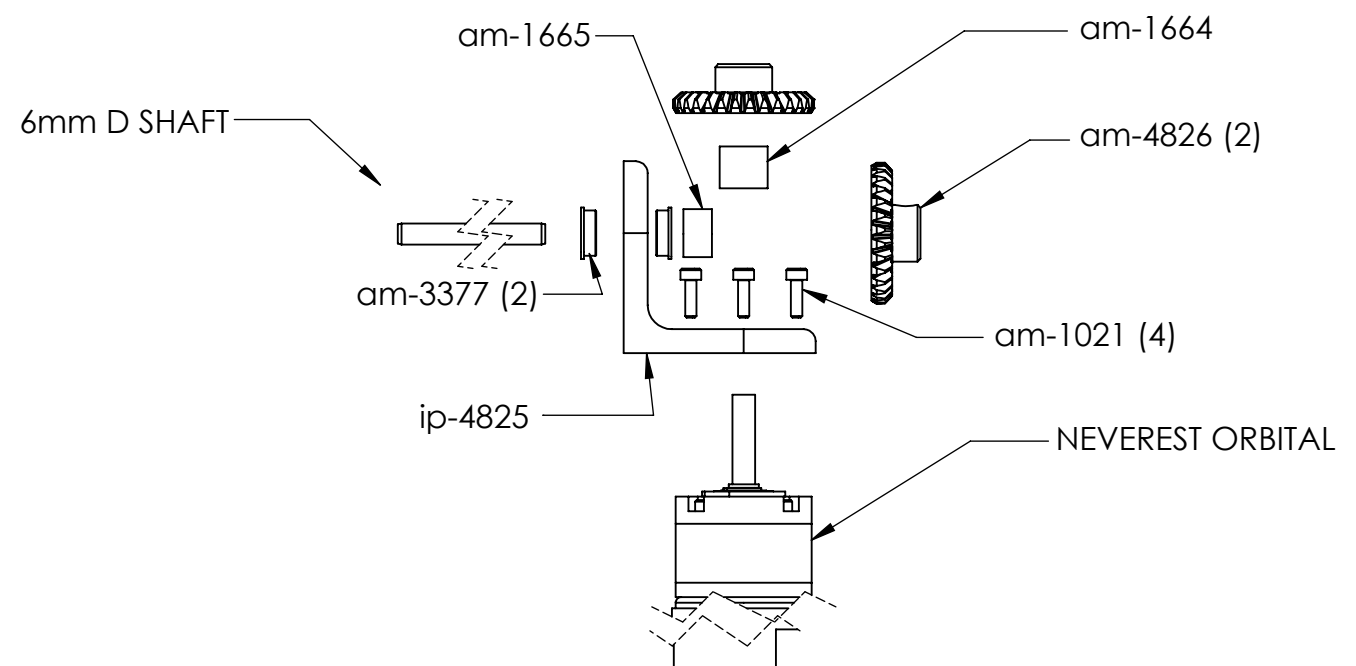
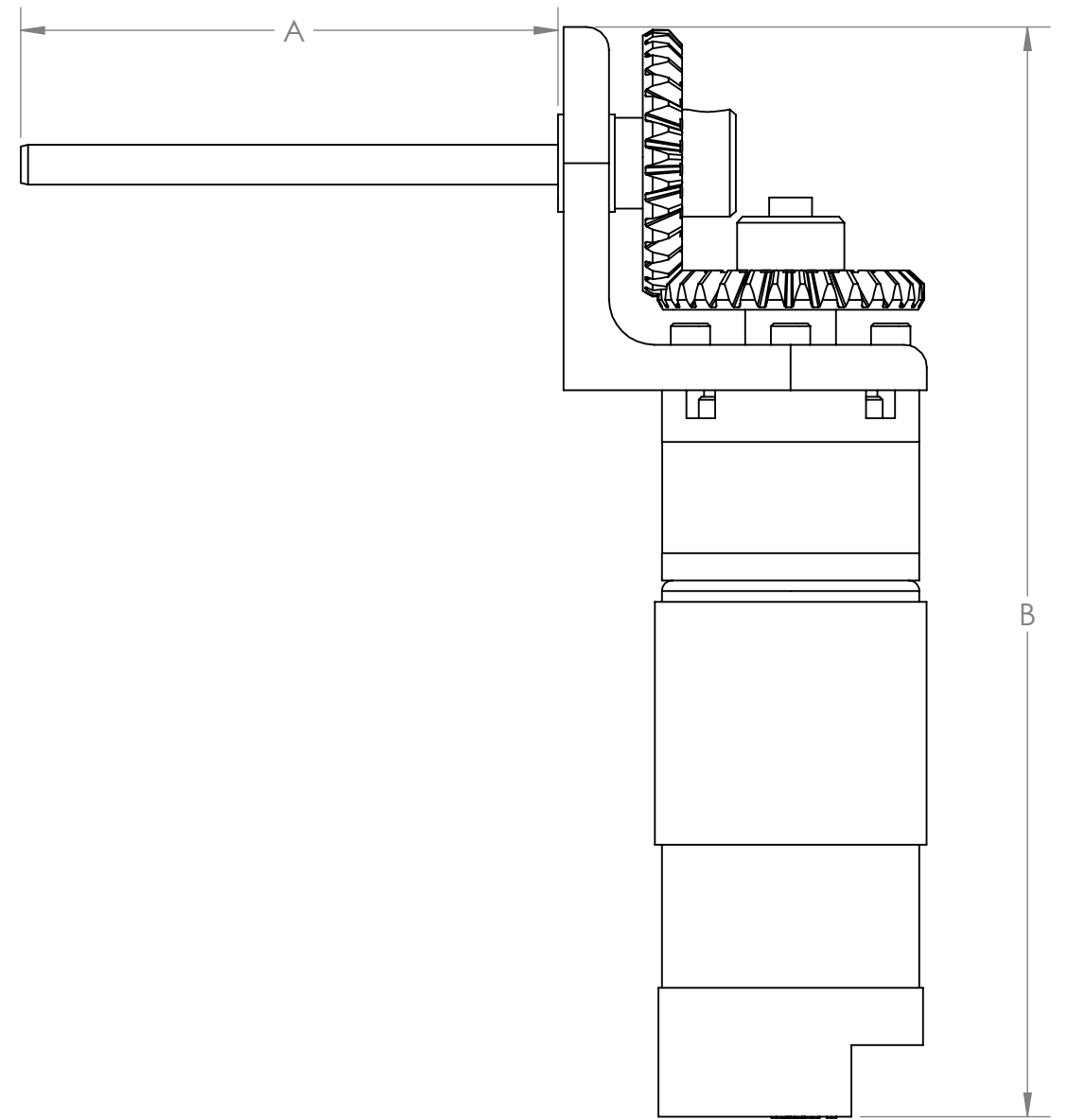
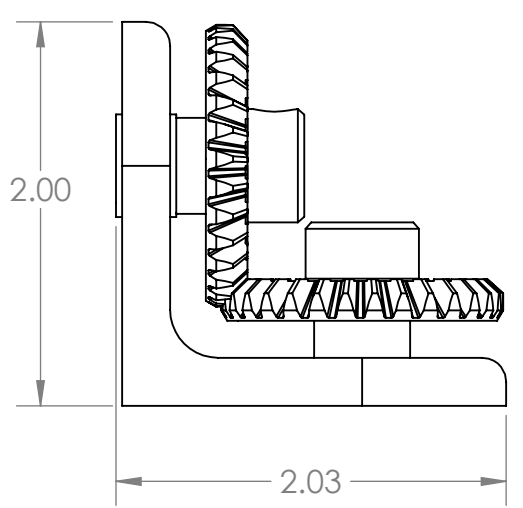
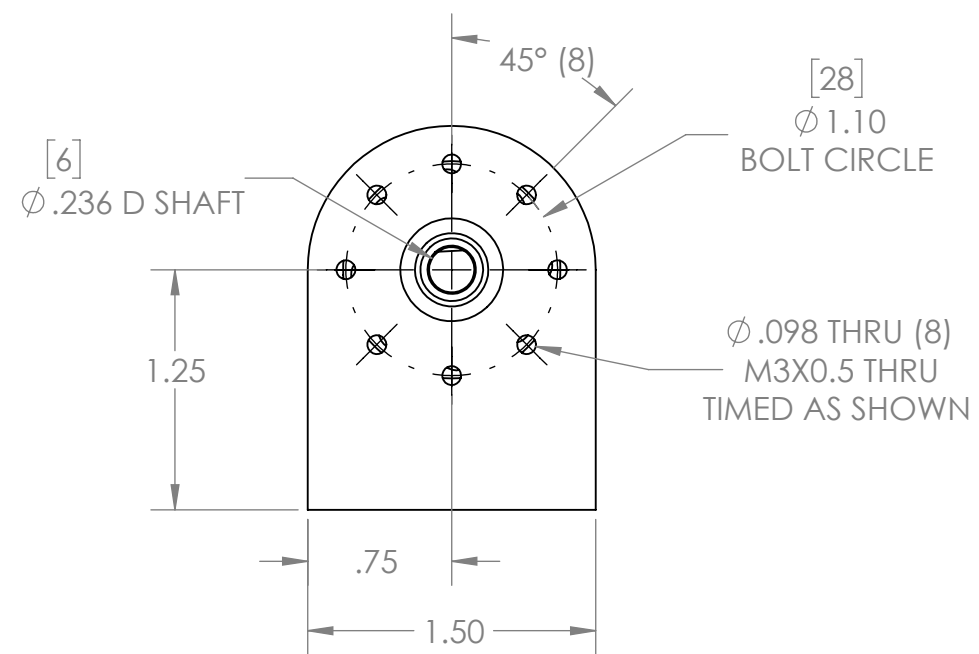
4

3

2

1


REVISION HISTORY			
REV.	DESCRIPTION	DATE	DRAWN BY
1	ORIGINAL PRINT	10/10/2022	P. YEUNG



*** SEE CAD FOR ADDITIONAL TOOLPATH INFO***

6mm D SHAFT	MAXIMUM USABLE SHAFT LENGTH (A)	MOTOR	LENGTH (B)
36mm SHAFT	0.44 [11.13mm]	3.7:1	6.00 [152.39mm]
100mm SHAFT	2.96 [75.13mm]	13.7:1	6.22 [157.95mm]
175mm SHAFT	5.91 [150.13mm]	19.2:1	6.22 [157.95mm]
450mm SHAFT	16.74 [425.13mm]	50.9:1	6.46 [164.20mm]
		263.7:1	6.71 [170.44mm]

UNLESS OTHERWISE SPECIFIED:		COMMENTS:	
DIMENSIONS ARE IN INCHES		DUAL DIMENSIONS ARE IN MILLIMETERS.	
TOLERANCES:		BREAK ALL SHARP EDGES.	
FRACTIONAL	±1/16		
ANGULAR: MACH	±1°		
ANGULAR: BEND	±5°		
ONE PLACE DECIMAL	±0.1		
TWO PLACE DECIMAL	±0.01		
THREE PLACE DECIMAL	±0.005		
FOUR PLACE DECIMAL	±0.0005		
MATERIAL	VARIOUS	NAME	DATE
FINISH		NL	10/17/22
DO NOT SCALE DRAWING		Q.A.	



TITLE:
NEVEREST BEVEL

SIZE	DWG. NO.	REV
B	am-4824	1

SCALE: 1:1 SHEET 1 OF 1

4

3

2

1