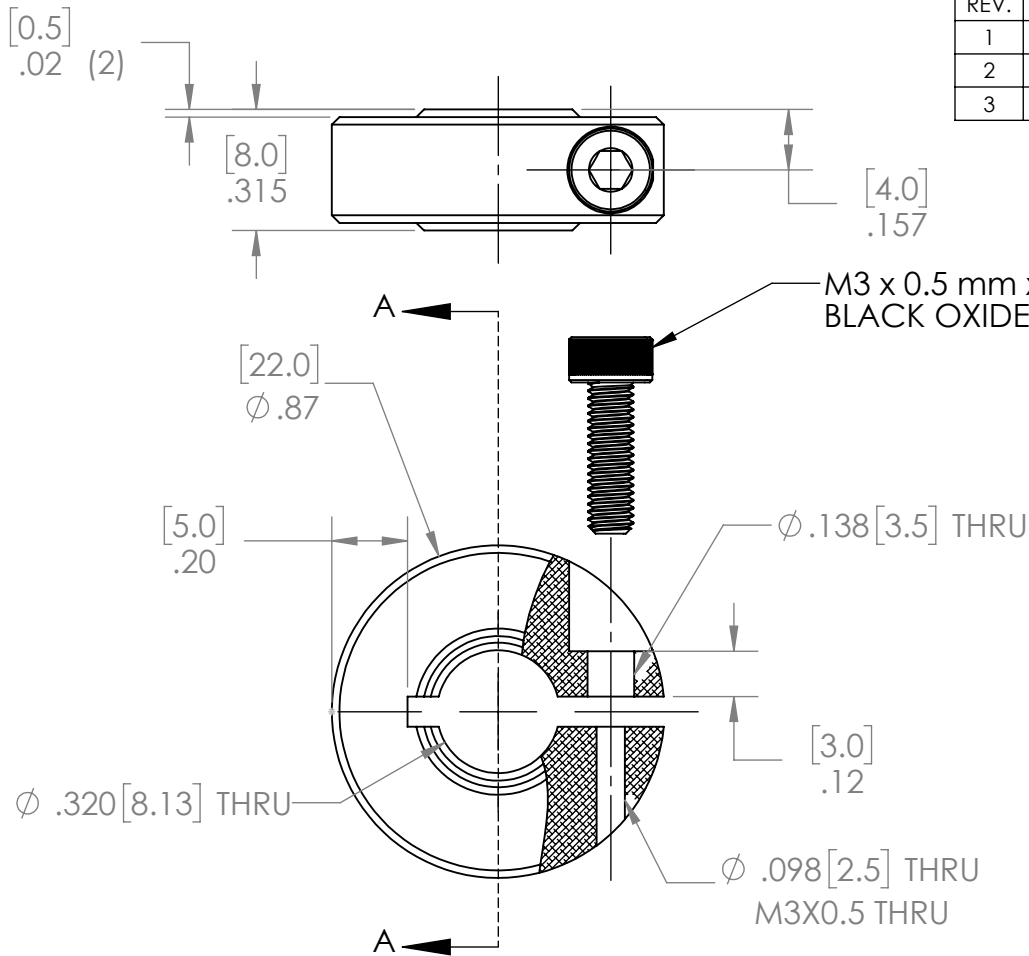


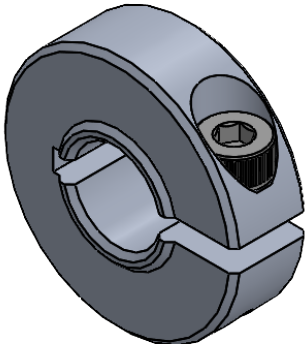
REVISION HISTORY			
REV.	DESCRIPTION	DATE	DRAWN BY
1	ORIGINAL PRINT	7/2/2021	R. SIMPSON
2	ADAPTED TO METRIC DIMENSIONS	5/31/2022	T. JORGENSEN
3	REMOVED EXTRANEIOUS DIMENSION	8/19/2022	N. MASSOUDA




M3 x 0.5 mm x 10 mm
BLACK OXIDE

SECTION A-A

*** SEE CAD FOR ADDITIONAL TOOLPATH INFO***



UNLESS OTHERWISE SPECIFIED:		COMMENTS:					
DIMENSIONS ARE IN INCHES		DUAL DIMENSIONS ARE IN MILLIMETERS.				TITLE:	
TOLERANCES: FRACTIONAL $\pm 1/16$ ANGULAR: MACH $\pm 1^\circ$ ANGULAR: BEND $\pm 5^\circ$ ONE PLACE DECIMAL ± 0.1 TWO PLACE DECIMAL ± 0.01 THREE PLACE DECIMAL ± 0.005 FOUR PLACE DECIMAL ± 0.0005		BREAK ALL SHARP EDGES.		8mm ROUND 1 PART THIN COLLAR CLAMP			
MATERIAL 6061-T6 AL		CHECKED	NAME NL	DATE 8/19/22	SIZE A	DWG. NO. am-1649	REV 3
FINISH DEBURRED		MFG APPR.		SCALE: 2:1		SHEET 1 OF 1	
DO NOT SCALE DRAWING		Q.A.					