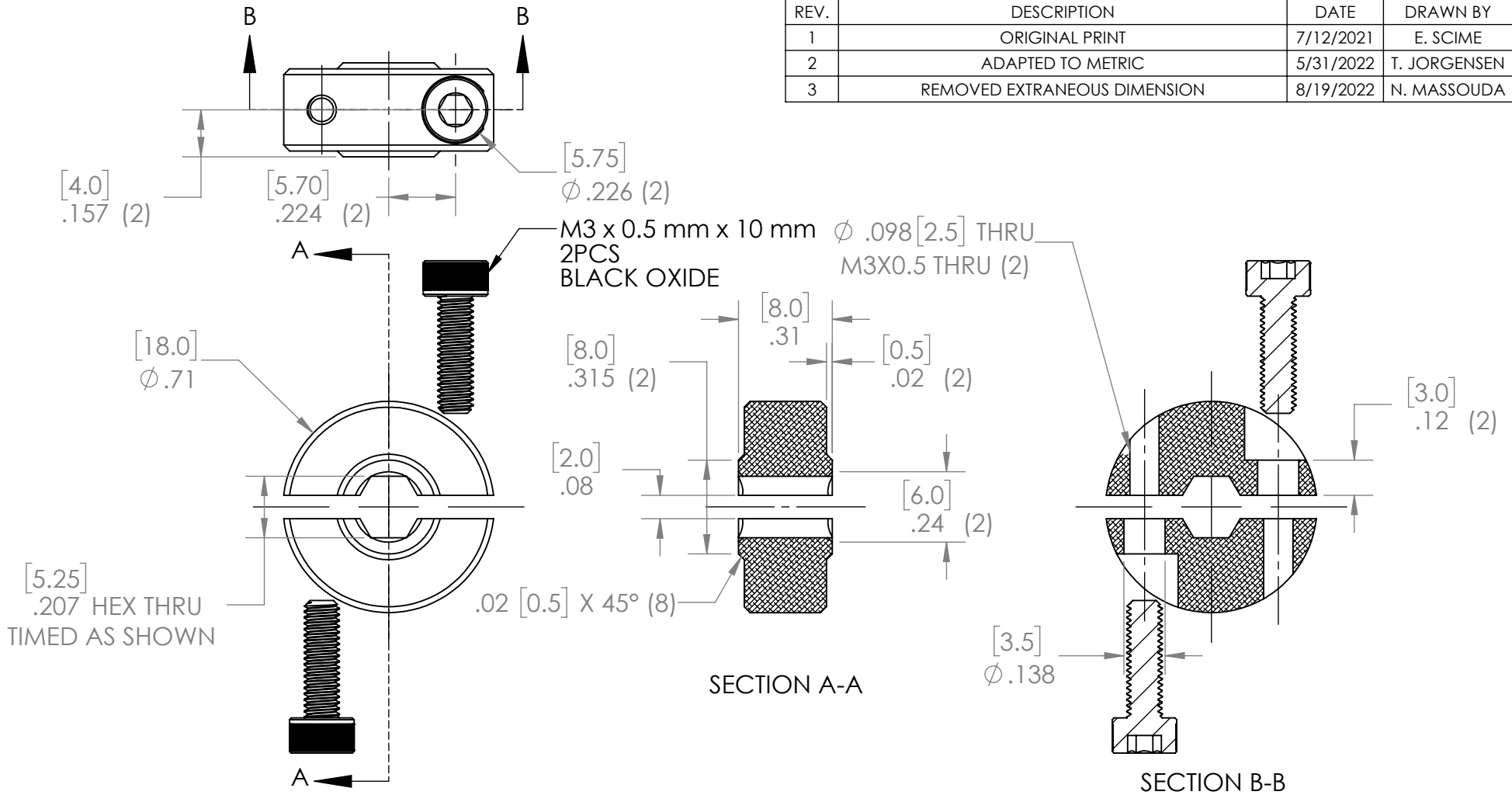
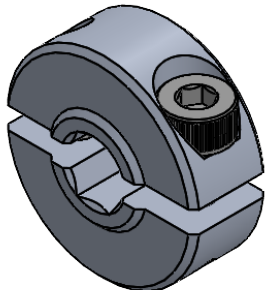



REVISION HISTORY			
REV.	DESCRIPTION	DATE	DRAWN BY
1	ORIGINAL PRINT	7/12/2021	E. SCIME
2	ADAPTED TO METRIC	5/31/2022	T. JORGENSEN
3	REMOVED EXTRANEIOUS DIMENSION	8/19/2022	N. MASSOUDA



*** SEE CAD FOR ADDITIONAL TOOLPATH INFO***



UNLESS OTHERWISE SPECIFIED:		COMMENTS:				
DIMENSIONS ARE IN INCHES		DUAL DIMENSIONS ARE IN MILLIMETERS.				
TOLERANCES:		BREAK ALL SHARP EDGES.		5mm HEX THIN 2 PART COLLAR CLAMP		
FRACTIONAL	$\pm 1/16$			SIZE	DWG. NO.	REV
ANGULAR: MACH	$\pm 1^\circ$			A	am-1652	3
ANGULAR: BEND	$\pm 5^\circ$			SCALE: 2:1		
ONE PLACE DECIMAL	± 0.1			SHEET 1 OF 1		
TWO PLACE DECIMAL	± 0.01					
THREE PLACE DECIMAL	± 0.005					
FOUR PLACE DECIMAL	± 0.0005					
MATERIAL	6061-T6 AL	CHECKED	NAME	DATE		
FINISH	DEBURRED	ENG APPR.	NL	8/19/22		
DO NOT SCALE DRAWING		MFG APPR.				
		Q.A.				