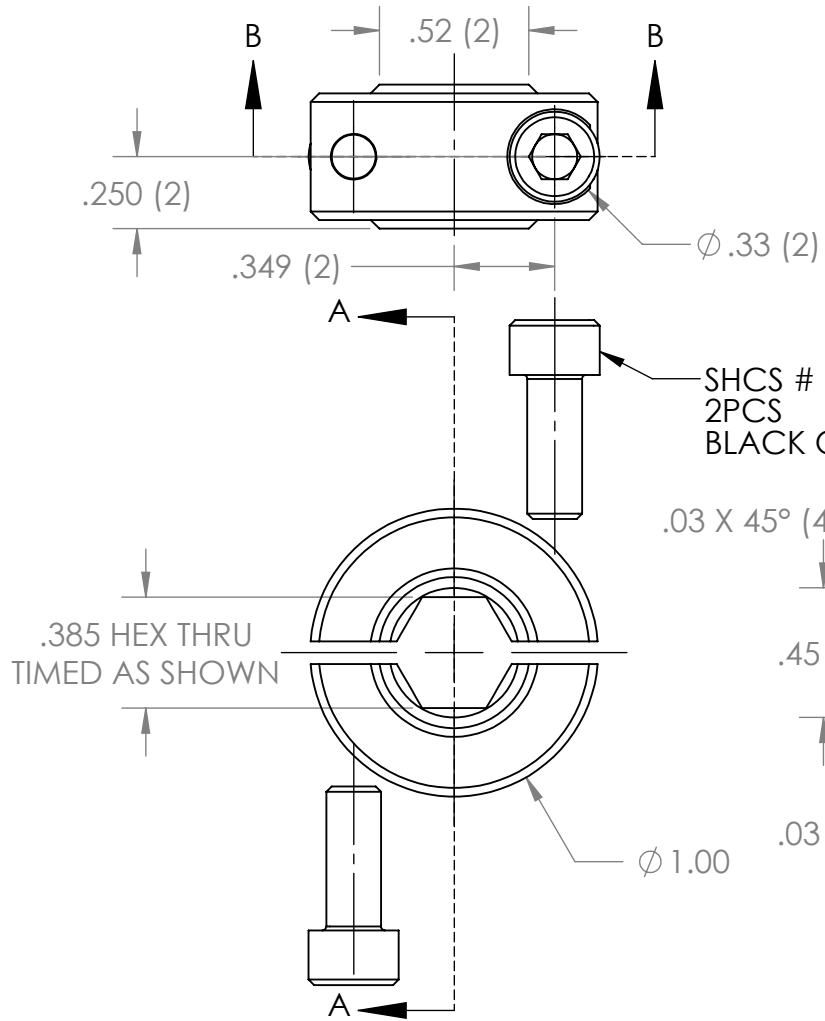


REVISION HISTORY			
REV.	DESCRIPTION	DATE	DRAWN BY
1	ORIGINAL PRINT	6/21/2021	E. SCIME
2	FULL SECTIONAL VIEW ADDED, UPDATED PART NUMBER	5/31/2022	T. JORGENSEN



SHCS # 10-32 x 1/2
2PCS
BLACK OXIDE

.385 HEX THRU
TIMED AS SHOWN

.03 X 45° (4)

.45 (2)

.03 (2)

.500

Ø1.00

SECTION A-A

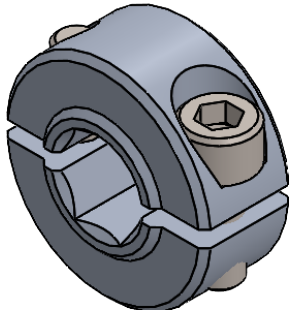
Ø.159

Ø.201 THRU (2)

.13 (2)

SECTION B-B

*** SEE CAD FOR ADDITIONAL TOOLPATH INFO***



UNLESS OTHERWISE SPECIFIED:		COMMENTS:	
DIMENSIONS ARE IN INCHES		DUAL DIMENSIONS ARE IN MILLIMETERS.	
TOLERANCES:		BREAK ALL SHARP EDGES.	
FRACTIONAL	±1/16		
ANGULAR: MACH	±1°		
ANGULAR: BEND	±5°		
ONE PLACE DECIMAL	±0.1		
TWO PLACE DECIMAL	±0.01		
THREE PLACE DECIMAL	±0.005		
FOUR PLACE DECIMAL	±0.0005		
MATERIAL	6061-T6 AL	CHECKED	NAME NL
FINISH	DEBURRED	DATE	6/6/22
DO NOT SCALE DRAWING		ENG APPR.	
		MFG APPR.	
		Q.A.	



TITLE:		
375HEX 2 PART COLLAR CLAMP		
SIZE	DWG. NO.	REV
A	am-1638	2
SCALE: 1.5:1		SHEET 1 OF 1