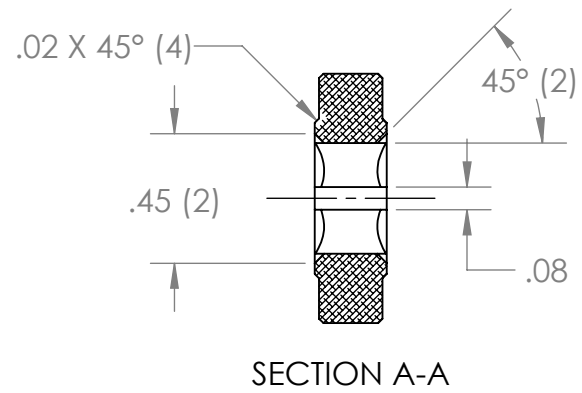
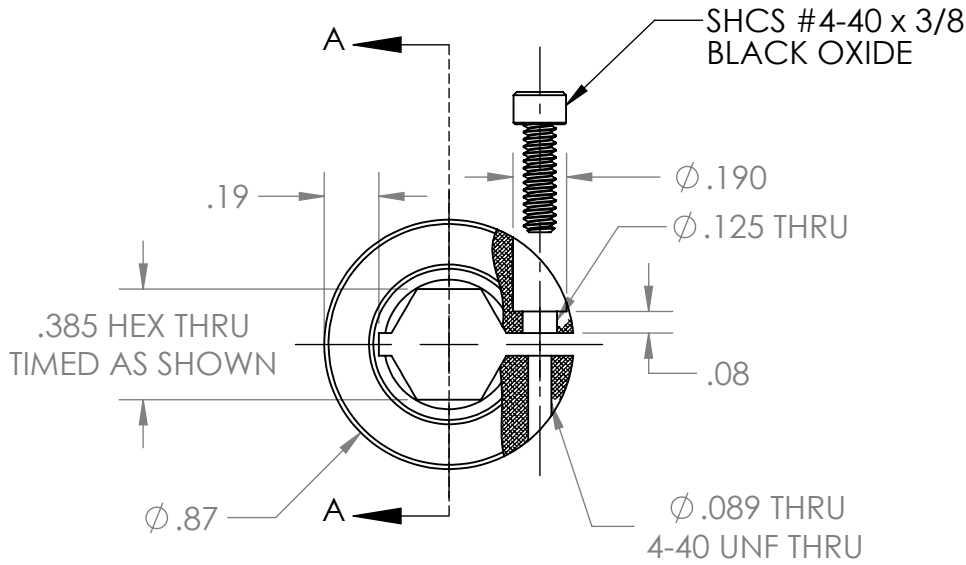
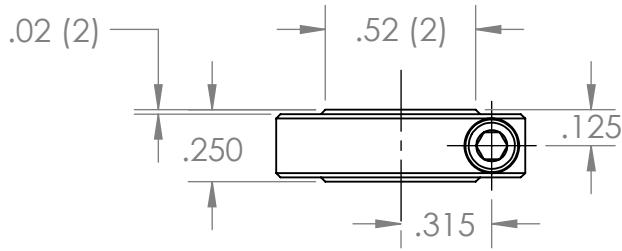
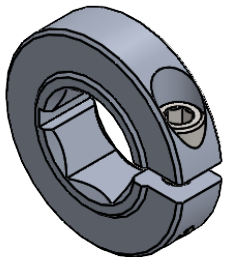



| REVISION HISTORY | | | |
|------------------|-----------------------------------|-----------|--------------|
| REV. | DESCRIPTION | DATE | DRAWN BY |
| 1 | ORIGINAL PRINT | 6/21/2021 | E. SCIME |
| 2 | UPDATED BORE & CHAMFER DIMENSIONS | 6/1/2022 | T. JORGENSEN |



*** SEE CAD FOR ADDITIONAL TOOLPATH INFO***



| | | | | | | |
|--|--|-------------------------------------|--|---|----------|----------|
| UNLESS OTHERWISE SPECIFIED: | | COMMENTS: | |  | | |
| DIMENSIONS ARE IN INCHES | | DUAL DIMENSIONS ARE IN MILLIMETERS. | | | | |
| TOLERANCES: FRACTIONAL ±1/16 ANGULAR: MACH ±1° ANGULAR: BEND ±5° ONE PLACE DECIMAL ±0.1 TWO PLACE DECIMAL ±0.01 THREE PLACE DECIMAL ±0.005 FOUR PLACE DECIMAL ±0.0005 | | BREAK ALL SHARP EDGES. | | 375HEX THIN 1 PART COLLAR CLAMP | | |
| MATERIAL | | NAME | | SIZE | DWG. NO. | REV |
| 6061-T6 AL | | NL | | A | am-1639 | 2 |
| FINISH | | DATE | | SCALE: 1.5:1 | | |
| DEBURRED | | 6/6/22 | | SHEET 1 OF 1 | | |
| DO NOT SCALE DRAWING | | Q.A. | | | | |