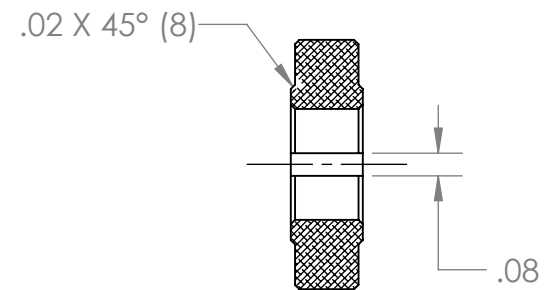
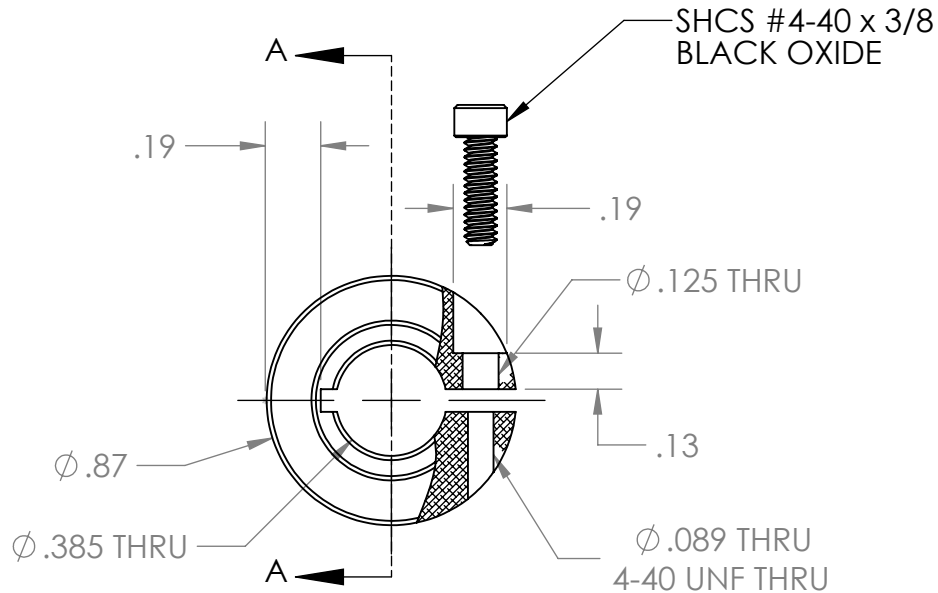
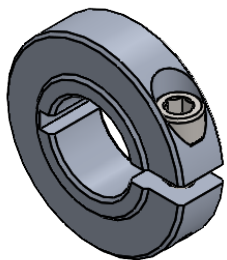



REVISION HISTORY			
REV.	DESCRIPTION	DATE	DRAWN BY
1	ORIGINAL PRINT	7/2/2021	R. SIMPSON
2	UPDATED BORE DIMENSION, NEW PART NUMBER	6/1/2022	T. JORGENSEN



SECTION A-A

\*\*\* SEE CAD FOR ADDITIONAL TOOLPATH INFO\*\*\*



UNLESS OTHERWISE SPECIFIED:		COMMENTS:			
<b>DIMENSIONS ARE IN INCHES</b>		DUAL DIMENSIONS ARE IN MILLIMETERS.			
TOLERANCES: FRACTIONAL ±1/16 ANGULAR: MACH ±1° ANGULAR: BEND ±5° ONE PLACE DECIMAL ±0.1 TWO PLACE DECIMAL ±0.01 THREE PLACE DECIMAL ±0.005 FOUR PLACE DECIMAL ±0.0005		BREAK ALL SHARP EDGES.		TITLE: 375 ROUND 1 PART THIN COLLAR CLAMP	
MATERIAL	6061-T6 AL	CHECKED	NAME NL	DATE 6/2/22	SIZE <b>A</b>
FINISH	DEBURRED	ENG APPR.	MFG APPR.		DWG. NO. am-1647
DO NOT SCALE DRAWING		Q.A.			REV 2
				SCALE: 1.5:1	SHEET 1 OF 1