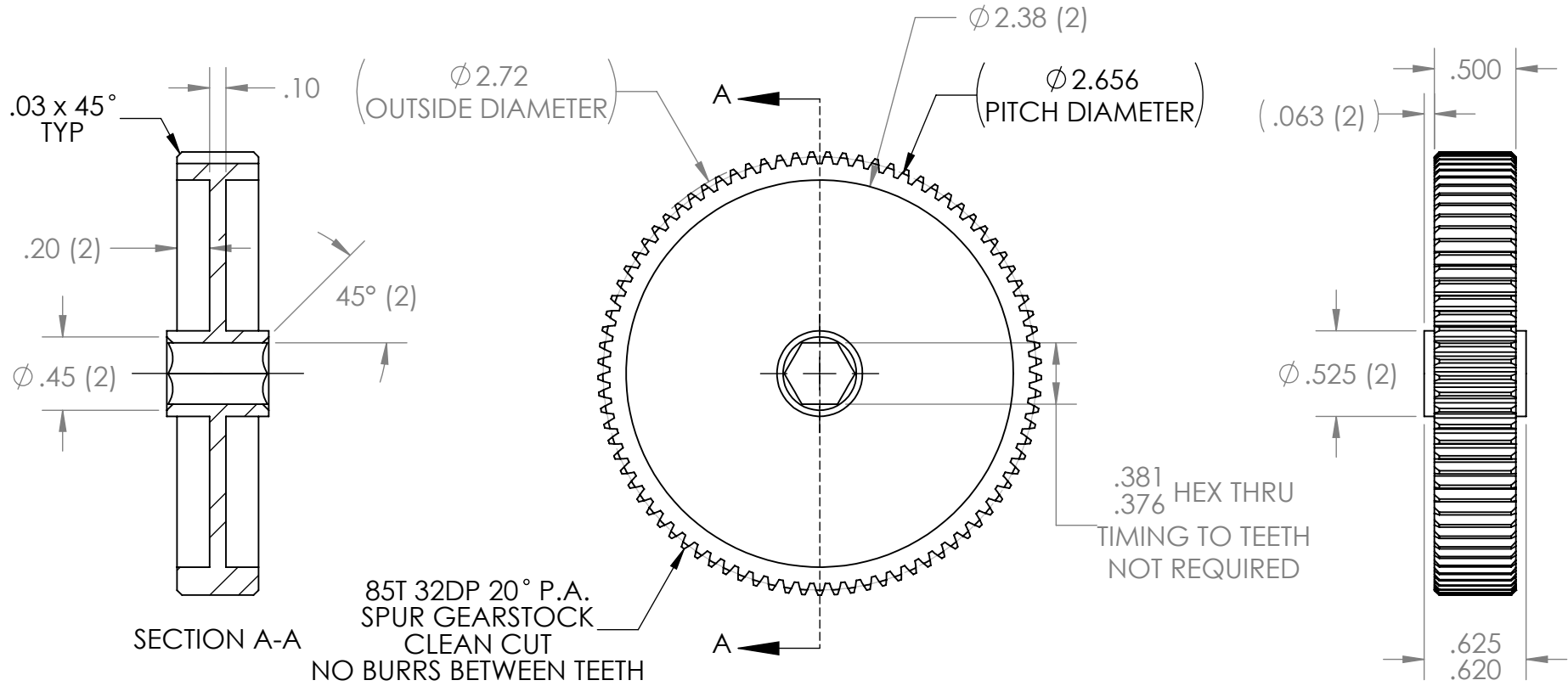
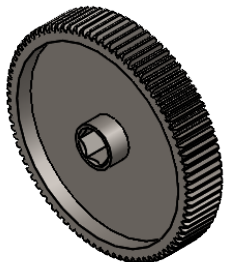


REVISION HISTORY			
REV.	DESCRIPTION	DATE	DRAWN BY
1	ORIGINAL PRINT	11/29/16	N. LAWRENCE
2	UPDATED TO AMDS-1	6/14/2022	T. JORGENSEN



\*\*\* SEE CAD FOR ADDITIONAL TOOLPATH INFO\*\*\*



UNLESS OTHERWISE SPECIFIED:		COMMENTS:				
<b>DIMENSIONS ARE IN INCHES</b>		DUAL DIMENSIONS ARE IN MILLIMETERS.				
TOLERANCES:		BREAK ALL SHARP EDGES.		TITLE:		
FRACTIONAL	±1/16			85T 32DP 20PA		
ANGULAR: MACH	±1°			500IN HEX BORE GEAR		
ANGULAR: BEND	±5°			SIZE	DWG. NO.	REV
ONE PLACE DECIMAL	±0.1			<b>A</b>	am-3533	2
TWO PLACE DECIMAL	±0.01			SCALE: 1:1		
THREE PLACE DECIMAL	±0.005			SHEET 1 OF 1		
FOUR PLACE DECIMAL	±0.0005					
MATERIAL	STEEL: 1117, 4140	CHECKED	NAME	DATE		
FINISH	DEBURRED ZINC PLATED	ENG APPR.	NM	6/16/22		
DO NOT SCALE DRAWING		MFG APPR.				
		Q.A.				