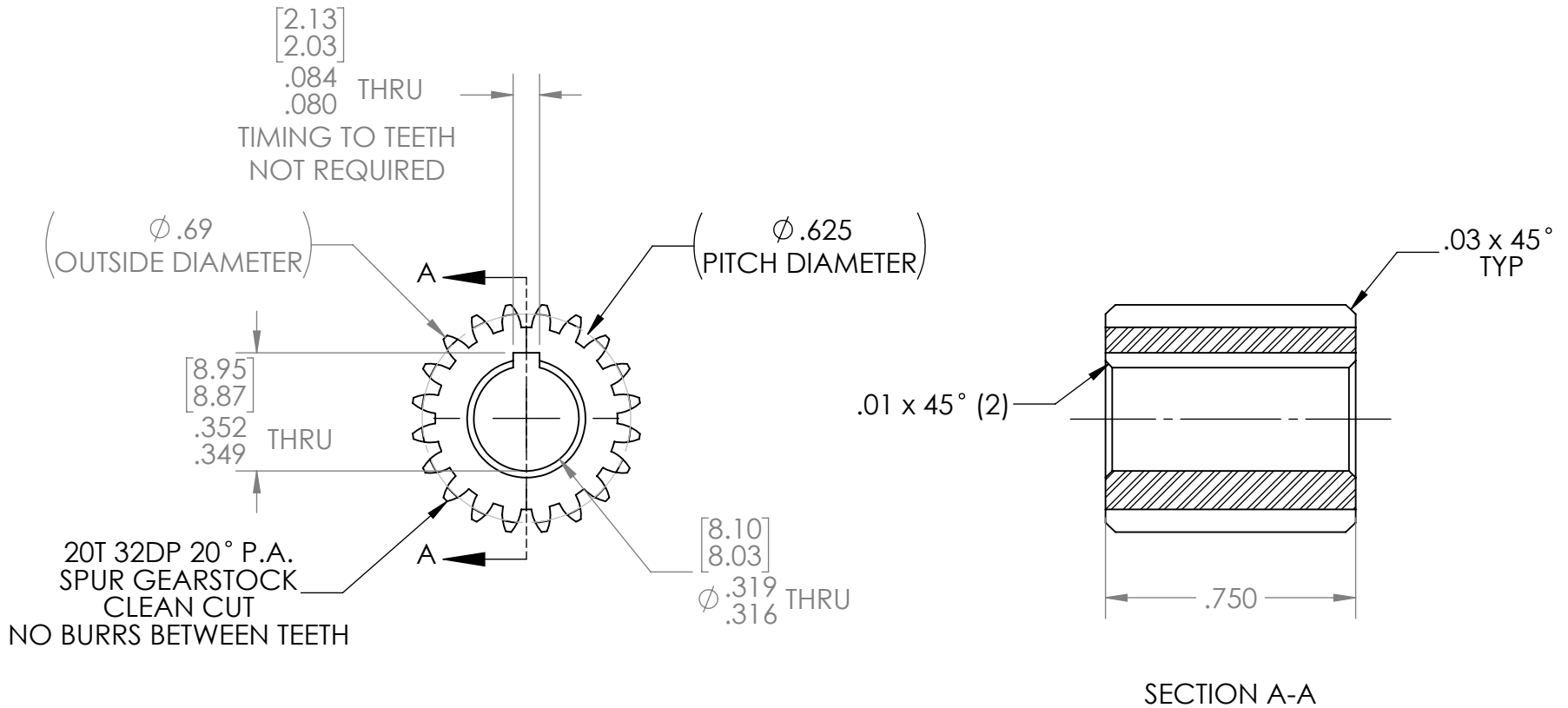
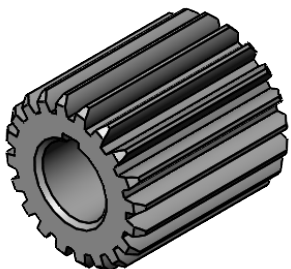


| REVISION HISTORY | | | |
|------------------|----------------|-----------|--------------|
| REV. | DESCRIPTION | DATE | DRAWN BY |
| 1 | ORIGINAL PRINT | 6/10/2022 | T. JORGENSEN |



*** SEE CAD FOR ADDITIONAL TOOLPATH INFO***



| | | | | | | |
|---------------------------------|-------------------------|-------------------------------------|------|-------------------|----------|-----|
| UNLESS OTHERWISE SPECIFIED: | | COMMENTS: | | | | |
| DIMENSIONS ARE IN INCHES | | DUAL DIMENSIONS ARE IN MILLIMETERS. | | | | |
| TOLERANCES: | | BREAK ALL SHARP EDGES. | | TITLE: | | |
| FRACTIONAL | $\pm 1/16$ | | | 20T 32DP 20PA | | |
| ANGULAR: MACH | $\pm 1^\circ$ | | | 8mm KEY BORE GEAR | | |
| ANGULAR: BEND | $\pm 5^\circ$ | | | SIZE | DWG. NO. | REV |
| ONE PLACE DECIMAL | ± 0.1 | | | A | am-4323 | 1 |
| TWO PLACE DECIMAL | ± 0.01 | | | SCALE: 2:1 | | |
| THREE PLACE DECIMAL | ± 0.005 | | | SHEET 1 OF 1 | | |
| FOUR PLACE DECIMAL | ± 0.0005 | | | | | |
| MATERIAL | STEEL: 1117, 4140 | CHECKED | NAME | DATE | | |
| FINISH | DEBURRED ZINC PLATED | ENG APPR. | NL | 6/29/22 | | |
| DO NOT SCALE DRAWING | | MFG APPR. | | | | |
| | | Q.A. | | | | |