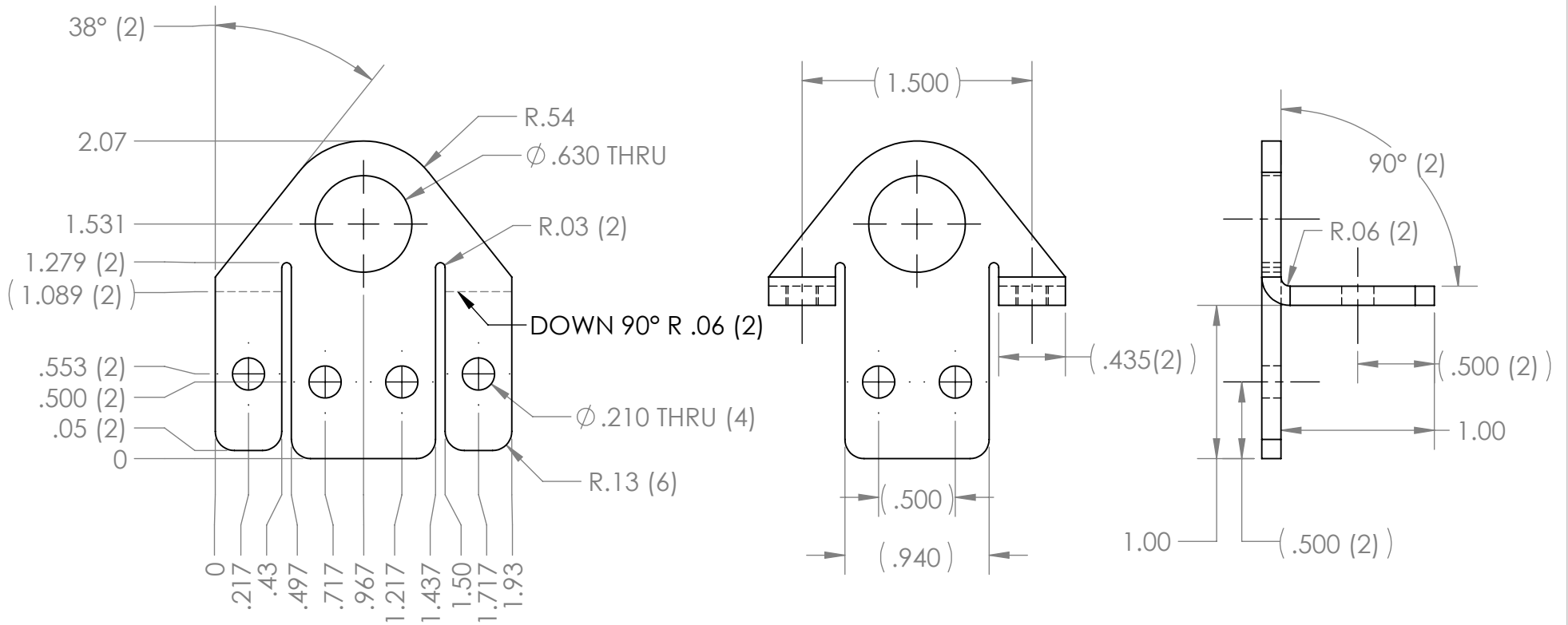
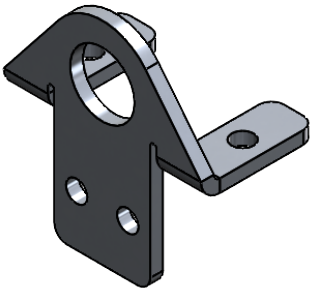


| REVISION HISTORY | | | |
|------------------|-----------------------------|-----------|--------------|
| REV. | DESCRIPTION | DATE | DRAWN BY |
| 1 | ORIGINAL PRINT | 3/14/2022 | B. HEININGER |
| 2 | CENTRAL HOLE I.D. INCREASED | 5/12/2022 | T. JORGENSEN |



*** SEE CAD FOR ADDITIONAL TOOLPATH INFO***



| UNLESS OTHERWISE SPECIFIED: | | COMMENTS: | | AndyMark | | | |
|---------------------------------|----------|-------------------------------------|------|--|----------|--------------|--|
| DIMENSIONS ARE IN INCHES | | DUAL DIMENSIONS ARE IN MILLIMETERS. | | TITLE: TRANSVERSE CYLINDER MOUNT BRACKET | | | |
| TOLERANCES: | | BREAK ALL SHARP EDGES. | | | | | |
| FRACTIONAL | ±1/16 | | | SIZE | DWG. NO. | REV | |
| ANGULAR: MACH | ±1° | | | A | am-3055a | 2 | |
| ANGULAR: BEND | ±5° | | | SCALE: 1:1 | | SHEET 1 OF 1 | |
| ONE PLACE DECIMAL | ±0.1 | | | | | | |
| TWO PLACE DECIMAL | ±0.01 | | | | | | |
| THREE PLACE DECIMAL | ±0.005 | | | | | | |
| FOUR PLACE DECIMAL | ±0.0005 | | | | | | |
| MATERIAL | 5052 AL | CHECKED | NAME | DATE | | | |
| FINISH | DEBURRED | ENG APPR. | NL | 5/12/22 | | | |
| DO NOT SCALE DRAWING | | MFG APPR. | | | | | |
| | | Q.A. | | | | | |