

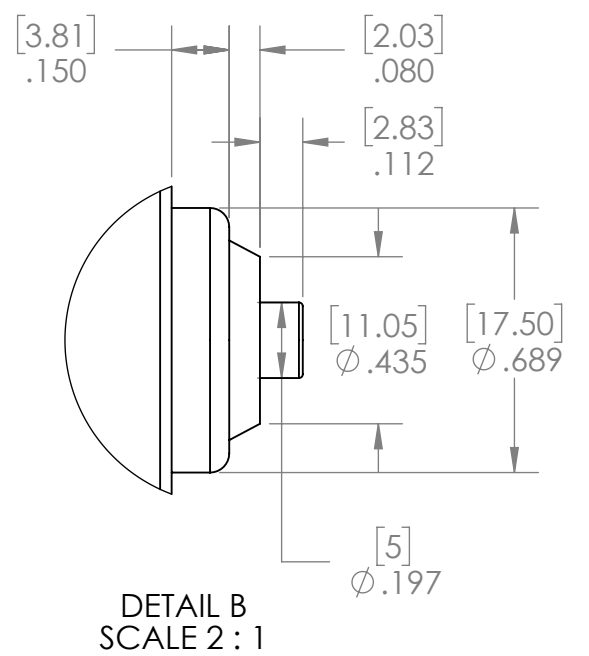
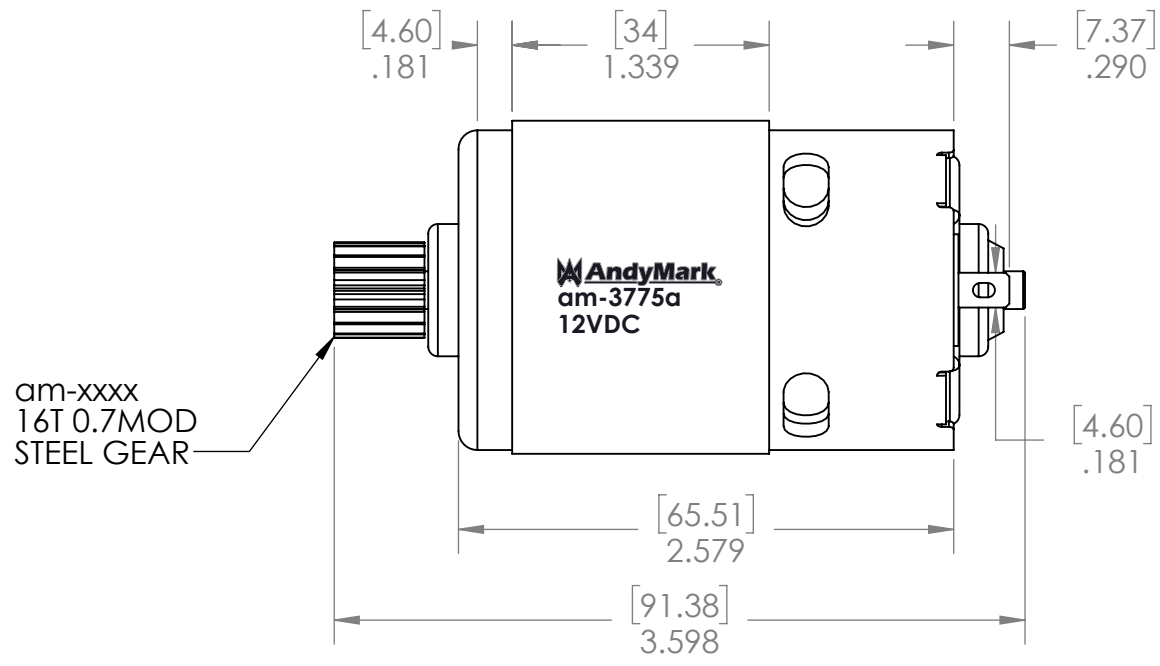
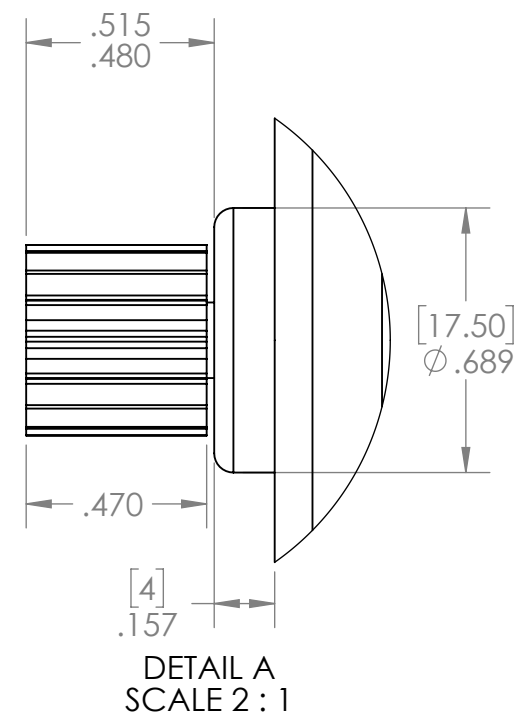
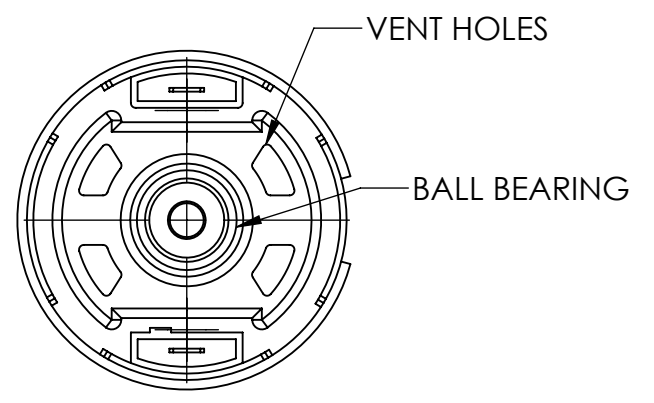
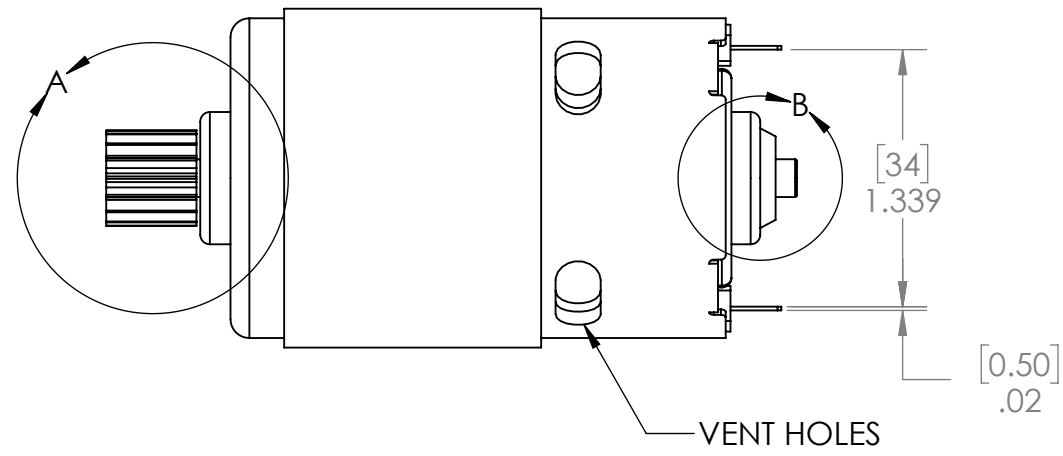
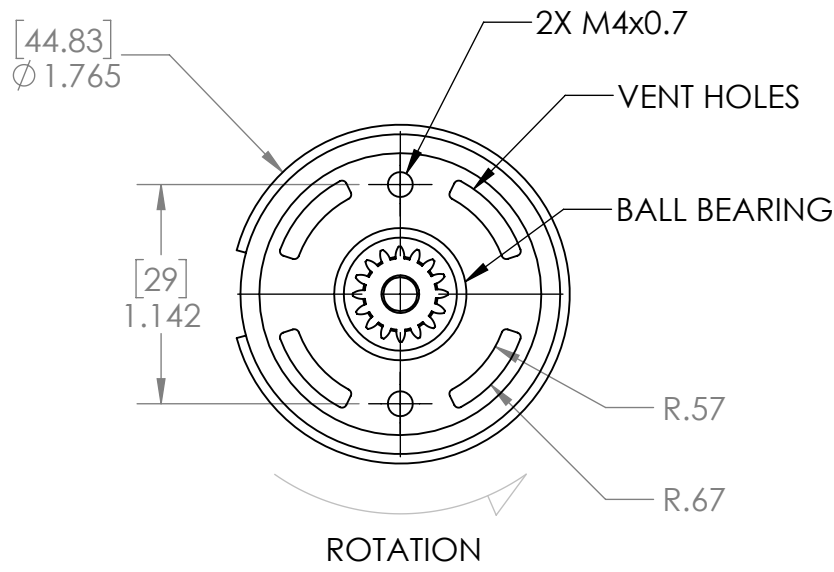
4

3

2

1

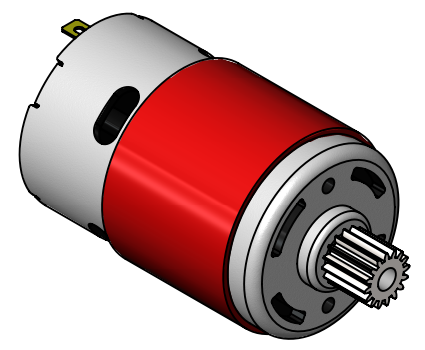
REVISION HISTORY			
REV.	DESCRIPTION	DATE	DRAWN BY
1	ORIGINAL PRINT	12/6/2018	N. LAWRENCE



am-xxxx  
16T 0.7MOD  
STEEL GEAR

AndyMark  
am-3775a  
12VDC

\*\*\* SEE CAD FOR ADDITIONAL TOOLPATH INFO\*\*\*



UNLESS OTHERWISE SPECIFIED:		COMMENTS:		TITLE:		
<b>DIMENSIONS ARE IN INCHES</b>		DUAL DIMENSIONS ARE IN MILLIMETERS.		<b>AndyMark</b>		
TOLERANCES:		BREAK ALL SHARP EDGES.		ANDYMARK		
FRACTIONAL	$\pm 1/16$			775a REDLINE MOTOR		
ANGULAR: MACH	$\pm 1^\circ$			WITH 16T 0.7MOD PINION		
ANGULAR: BEND	$\pm 5^\circ$			SIZE	DWG. NO.	REV
ONE PLACE DECIMAL	$\pm 0.1$			<b>B</b>	am-3775a_16T	1
TWO PLACE DECIMAL	$\pm 0.01$			SCALE: 1:1 SHEET 1 OF 1		
THREE PLACE DECIMAL	$\pm 0.005$					
FOUR PLACE DECIMAL	$\pm 0.0005$					
MATERIAL						
MOTOR						
FINISH						
RED POWDERCOAT FLUX RING SILVER ZINC PLATED BODY GEAR PRESS FIT ONTO SHAFT						
DO NOT SCALE DRAWING						

4

3

2

1