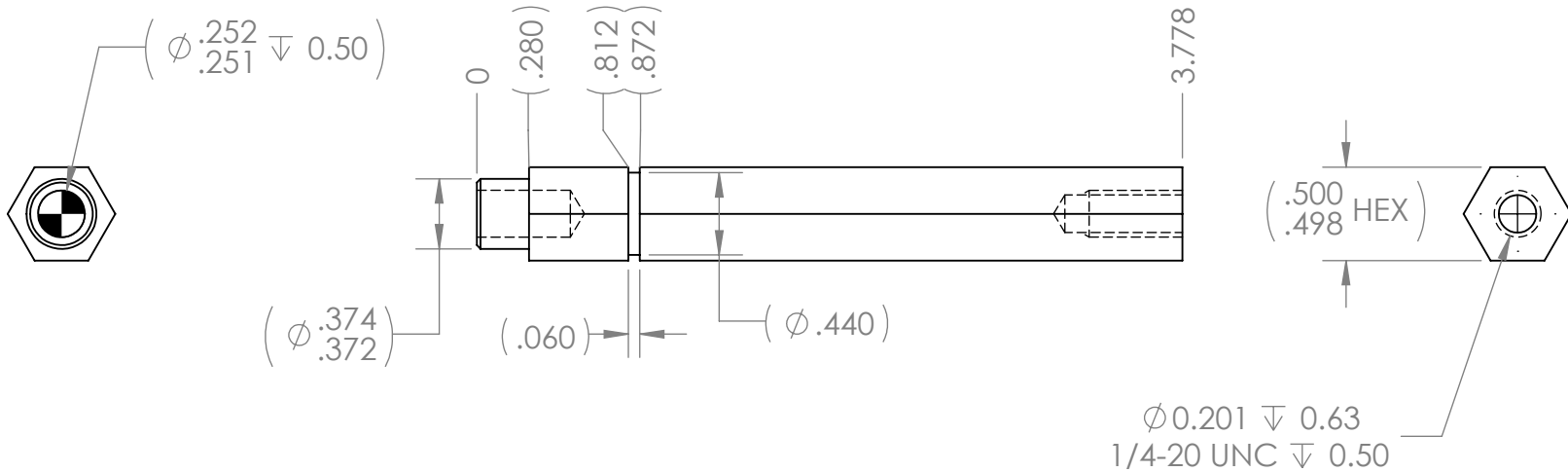
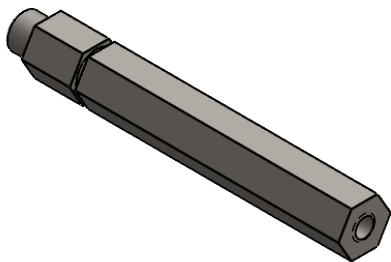


| REVISION HISTORY | | | |
|------------------|----------------|------------|----------|
| REV. | DESCRIPTION | DATE | DRAWN BY |
| 1 | ORIGINAL PRINT | 11/18/2022 | E. SCIME |



*** SEE CAD FOR ADDITIONAL TOOLPATH INFO***



| | | | | | | | |
|--|--|-------------------------------------|---------|---|---------------|------------------|-------|
| UNLESS OTHERWISE SPECIFIED: | | COMMENTS: | | | | | |
| DIMENSIONS ARE IN INCHES | | DUAL DIMENSIONS ARE IN MILLIMETERS. | | | | | |
| TOLERANCES: FRACTIONAL ±1/16 ANGULAR: MACH ±1° ANGULAR: BEND ±5° ONE PLACE DECIMAL ±0.1 TWO PLACE DECIMAL ±0.01 THREE PLACE DECIMAL ±0.005 FOUR PLACE DECIMAL ±0.0005 | | BREAK ALL SHARP EDGES. | | TITLE: SHORTENED TOUGHBOX SHAFT FOR EVO SLIM | | | |
| MATERIAL ip-0801a | | CHECKED | NAME NL | DATE | SIZE A | DWG. NO. am-4882 | REV 1 |
| FINISH DEBURRED ZINC PLATED | | ENG APPR. | | | SCALE: 1:1 | | |
| DO NOT SCALE DRAWING | | MFG APPR. | | | SHEET 1 OF 1 | | |
| | | Q.A. | | | | | |