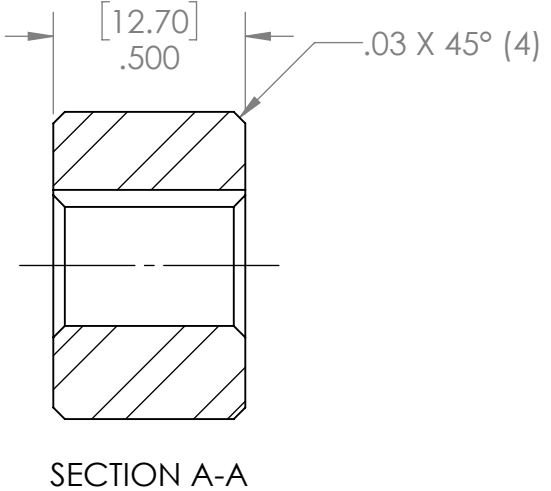
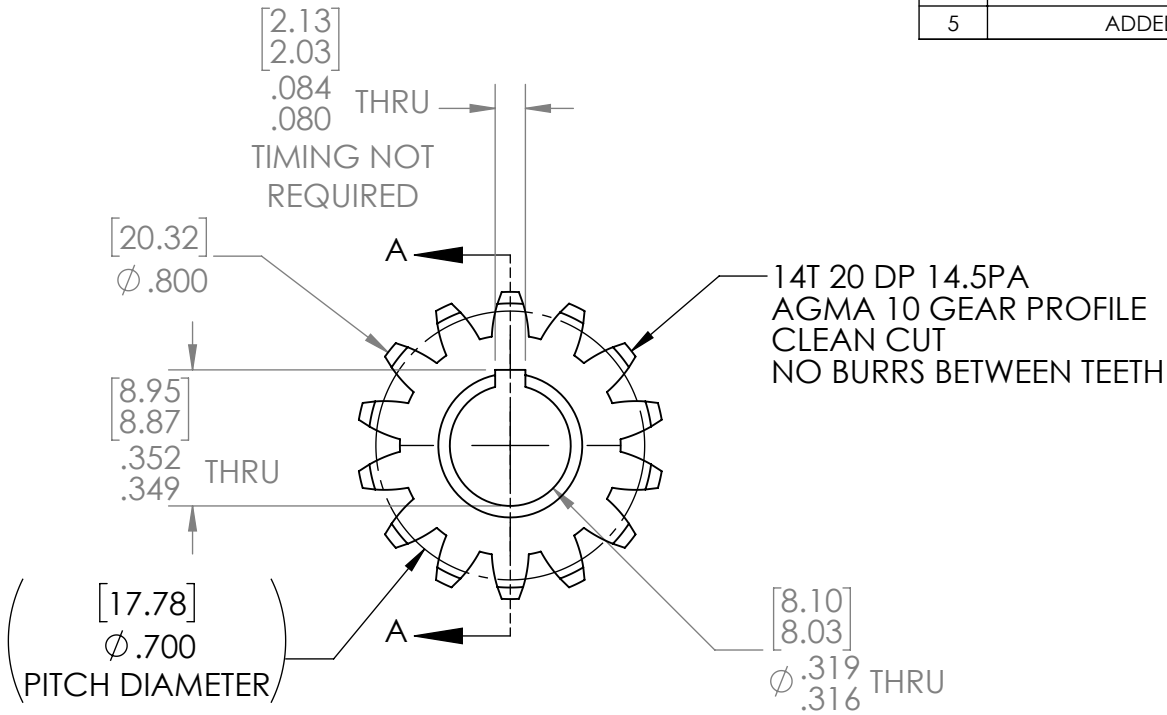
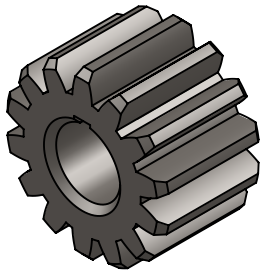


REVISION HISTORY			
REV.	DESCRIPTION	DATE	DRAWN BY
3	ORIGINAL PRINT	5/15/2009	A. BAKER
4	REDRAWN TO AMDS-1, TOL UPDATED	5/15/2018	A. SHORES
5	ADDED CHAMFERS, TOL UPDATED	4/30/2020	N. LAWRENCE



*** SEE CAD FOR ADDITIONAL TOOLPATH INFO***



UNLESS OTHERWISE SPECIFIED:		COMMENTS:				
DIMENSIONS ARE IN INCHES		DUAL DIMENSIONS ARE IN MILLIMETERS.				
TOLERANCES:		BREAK ALL SHARP EDGES.		TITLE:		
FRACTIONAL	±1/16			14T 20DP 14.5PA		
ANGULAR: MACH	±1°			8mm KEY BORE GEAR		
ANGULAR: BEND	±5°			SIZE	DWG. NO.	REV
ONE PLACE DECIMAL	±0.1			A	am-0034	5
TWO PLACE DECIMAL	±0.01			SCALE: 2:1		
THREE PLACE DECIMAL	±0.005			SHEET 1 OF 1		
FOUR PLACE DECIMAL	±0.0005					
MATERIAL	1215, 4140 STEEL	CHECKED	NAME	DATE		
FINISH	DEBURRED ZINC PLATED	ENG APPR.	KK	4/30/20		
DO NOT SCALE DRAWING		MFG APPR.				
		Q.A.				