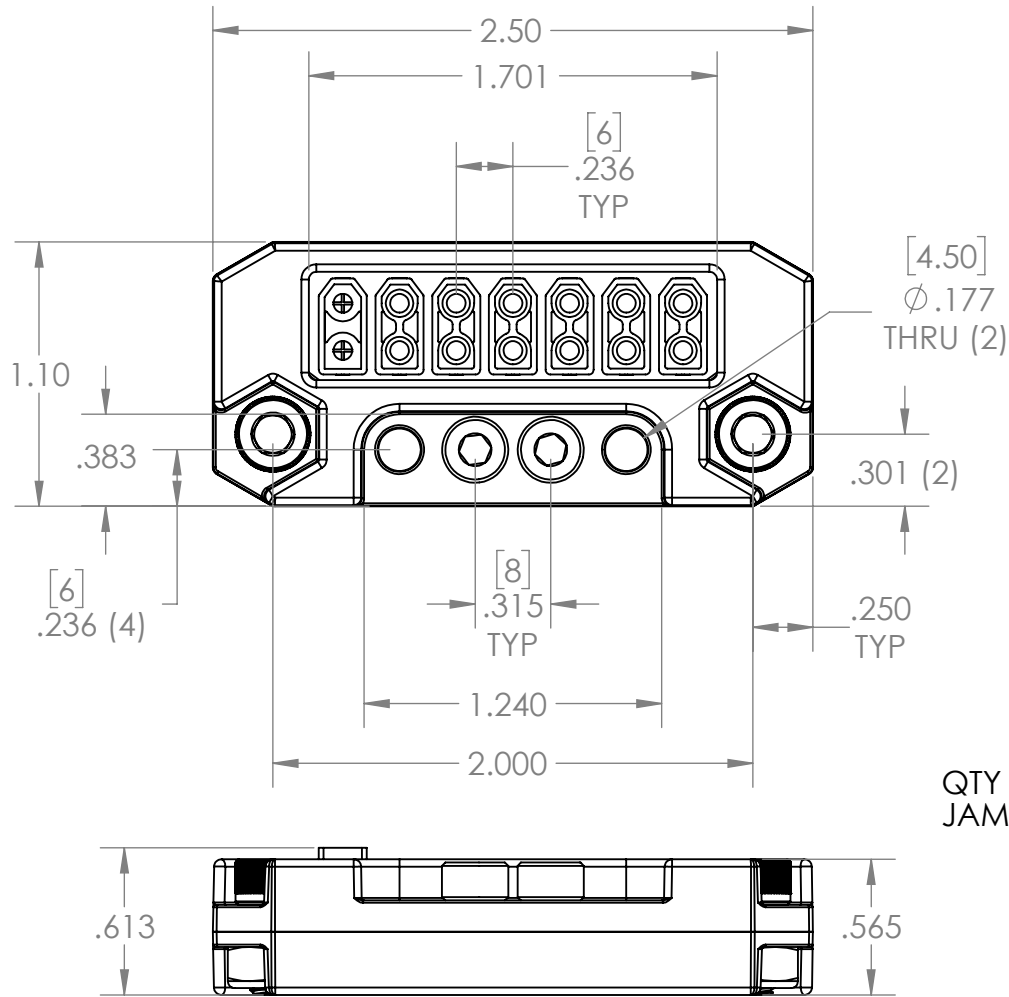


REV.	DESCRIPTION	DATE	DRAWN BY
1	ORIGINAL PRINT	8/30/2023	J. DOMINIACK

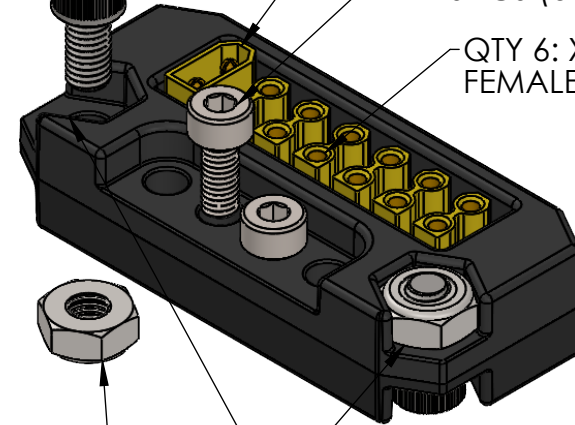


QTY 2: 10-32 x 0.375" SHCS (am-1359)

QTY 1: XT30 MALE INPUT

QTY 2: M4-0.7 x 10mm SHCS (am-1264)

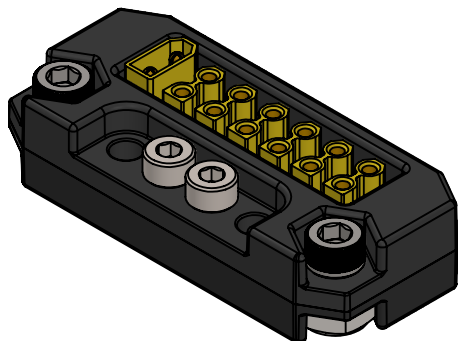
QTY 6: XT30 FEMALE OUTPUTS



QTY 2: 10-32 NYLOCK JAM NUT (am-1063)

SCREWS CAN BE FASTENED FROM EITHER DIRECTION

*** SEE CAD FOR ADDITIONAL TOOLPATH INFO***



UNLESS OTHERWISE SPECIFIED:		COMMENTS:					
DIMENSIONS ARE IN INCHES		DUAL DIMENSIONS ARE IN MILLIMETERS.					TITLE:
TOLERANCES:		BREAK ALL SHARP EDGES.		XT30 POWER DISTRIBUTION BLOCK			
FRACTIONAL	$\pm 1/16$			SIZE	DWG. NO.	REV	
ANGULAR: MACH	$\pm 1^\circ$			A	am-4990	1	
ANGULAR: BEND	$\pm 5^\circ$			SCALE: 5:4		SHEET 1 OF 1	
ONE PLACE DECIMAL	± 0.1						
TWO PLACE DECIMAL	± 0.01						
THREE PLACE DECIMAL	± 0.005						
FOUR PLACE DECIMAL	± 0.0005						
MATERIAL	BLACK PLA+ STEEL HARDWARE	CHECKED	NAME	DATE			
FINISH	DEBURRED	ENG APPR.	PY	8/31/23			
DO NOT SCALE DRAWING		MFG APPR.					
		Q.A.					