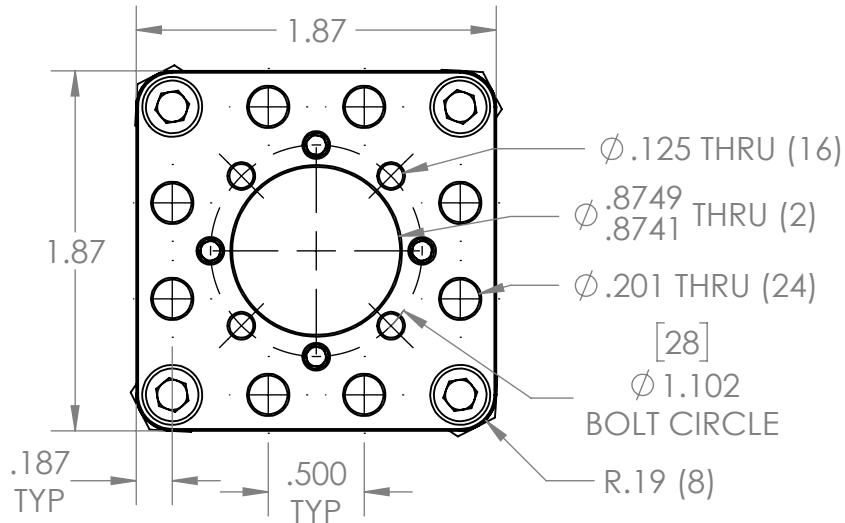
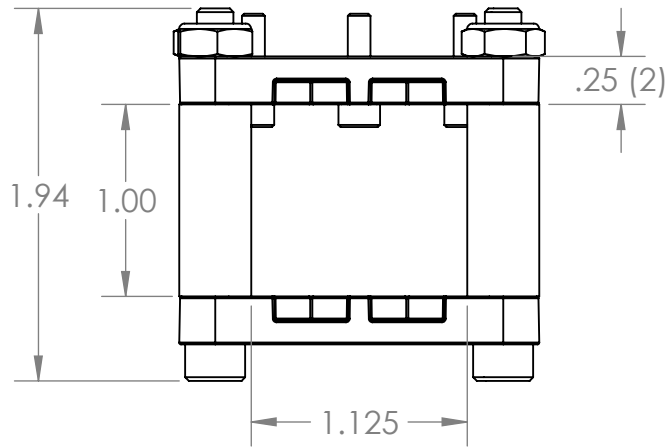


REV.	DESCRIPTION	DATE	DRAWN BY
1	ORIGINAL PRINT	8/24/2023	J. DOMINIACK



QTY 4: 0.375 OD x 1.00  
NYLON SPACER  
(am-1696)

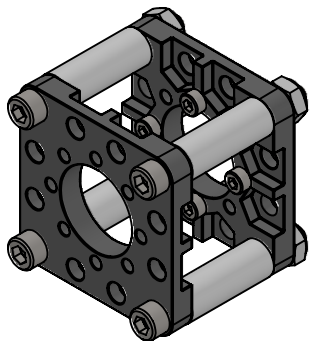
QTY 4: 10-32 NYLOCK JAM NUT  
(am-1063)

QTY 4: 10-32 x 1.75" SHCS  
(am-1048)

QTY 4: M3-0.5 x 12mm  
SHCS (am-1706)

QTY 2: ROBOTS SOLO  
MOTOR BEARING  
MOUNT (am-5022)

\*\*\* SEE CAD FOR ADDITIONAL TOOLPATH INFO\*\*\*



UNLESS OTHERWISE SPECIFIED:		COMMENTS:					
<b>DIMENSIONS ARE IN INCHES</b>		DUAL DIMENSIONS ARE IN MILLIMETERS.					TITLE: <b>ROBITS SOLO MOTOR BEARING ASSEMBLY</b>
TOLERANCES: FRACTIONAL ±1/16 ANGULAR: MACH ±1° ANGULAR: BEND ±5° ONE PLACE DECIMAL ±0.1 TWO PLACE DECIMAL ±0.01 THREE PLACE DECIMAL ±0.005 FOUR PLACE DECIMAL ±0.0005		BREAK ALL SHARP EDGES.		SIZE	DWG. NO.	REV	
MATERIAL: GRAY POLYCARBONATE NYLON STEEL HARDWARE		CHECKED	NAME	DATE	<b>A</b>	<b>am-5030</b>	<b>1</b>
FINISH: DEBURRED		ENG APPR.	PY	8/29/23			
DO NOT SCALE DRAWING		MFG APPR.	Q.A.		SHEET 1 OF 1		