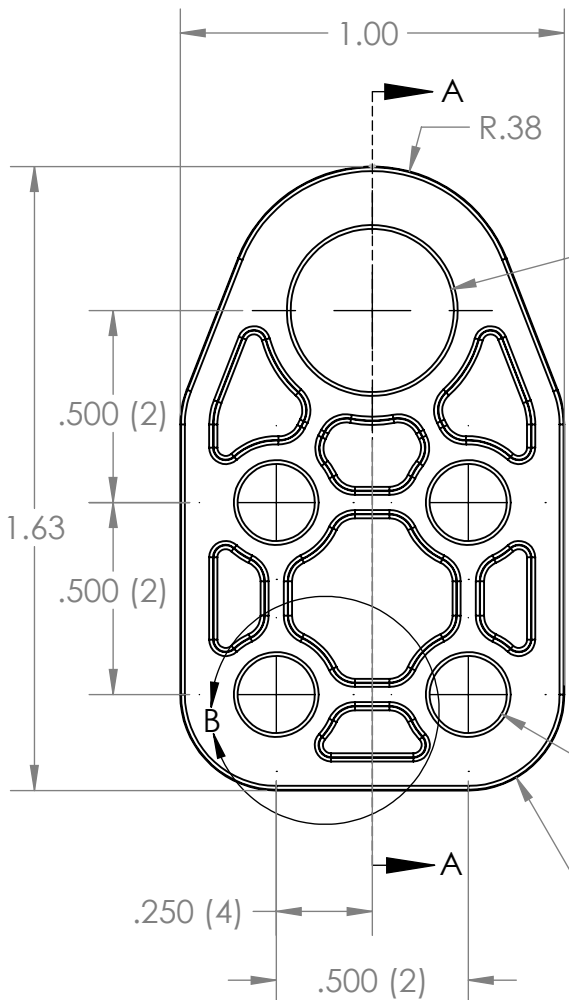


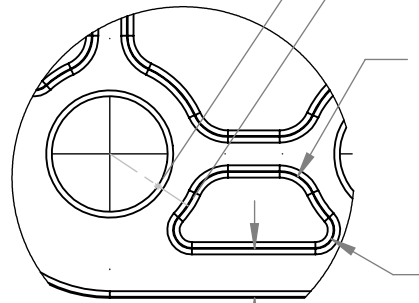
REVISION HISTORY			
REV.	DESCRIPTION	DATE	DRAWN BY
1	ORIGINAL PRINT	3/30/2023	P. YEUNG



R.062 HOLE TO POCKET
RIB THICKNESS TYP

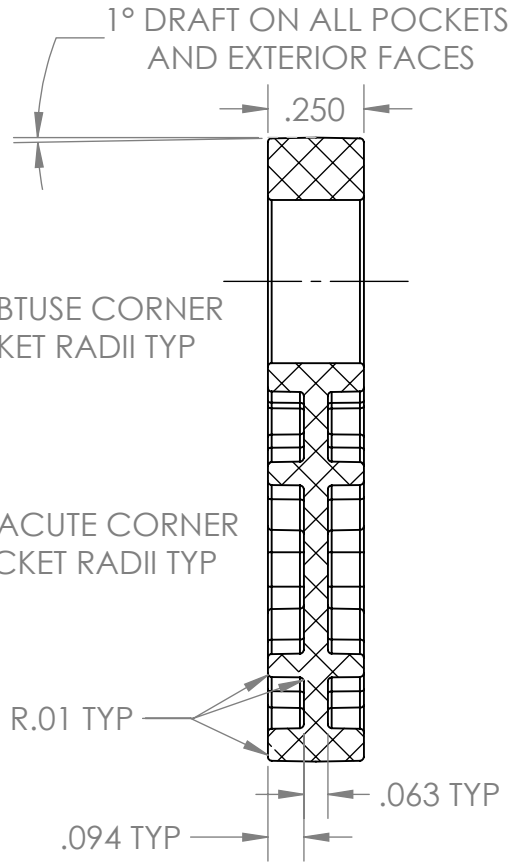
$\phi .428$
 $\phi .425$
THRU ALL
NO DRAFT

$\phi .201$ THRU ALL (4)
NO DRAFT



.086 EXTERIOR POCKET
RIB THICKNESS

DETAIL B
SCALE 3 : 1



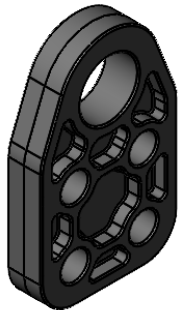
R.01 TYP

.094 TYP

.063 TYP

SECTION A-A

*** SEE CAD FOR ADDITIONAL TOOLPATH INFO***



UNLESS OTHERWISE SPECIFIED:		COMMENTS:	
DIMENSIONS ARE IN INCHES		DUAL DIMENSIONS ARE IN MILLIMETERS.	
TOLERANCES:		BREAK ALL SHARP EDGES.	
FRACTIONAL	$\pm 1/16$	CHECKED	NAME
ANGULAR: MACH	$\pm 1^\circ$	ENG APPR.	NM
ANGULAR: BEND	$\pm 5^\circ$	MFG APPR.	DATE
ONE PLACE DECIMAL	± 0.1	Q.A.	4/3/23
TWO PLACE DECIMAL	± 0.01		
THREE PLACE DECIMAL	± 0.005		
FOUR PLACE DECIMAL	± 0.0005		
MATERIAL		SIZE	
GRAY ACETAL		DWG. NO.	
FINISH		REV	
DEBURRED		1	
DO NOT SCALE DRAWING		SCALE: 2:1	



TITLE:
**ROBITS SIDE
BUSHING CARRIER**

SIZE **A** DWG. NO. **am-5013** REV **1**

SCALE: 2:1 SHEET 1 OF 1