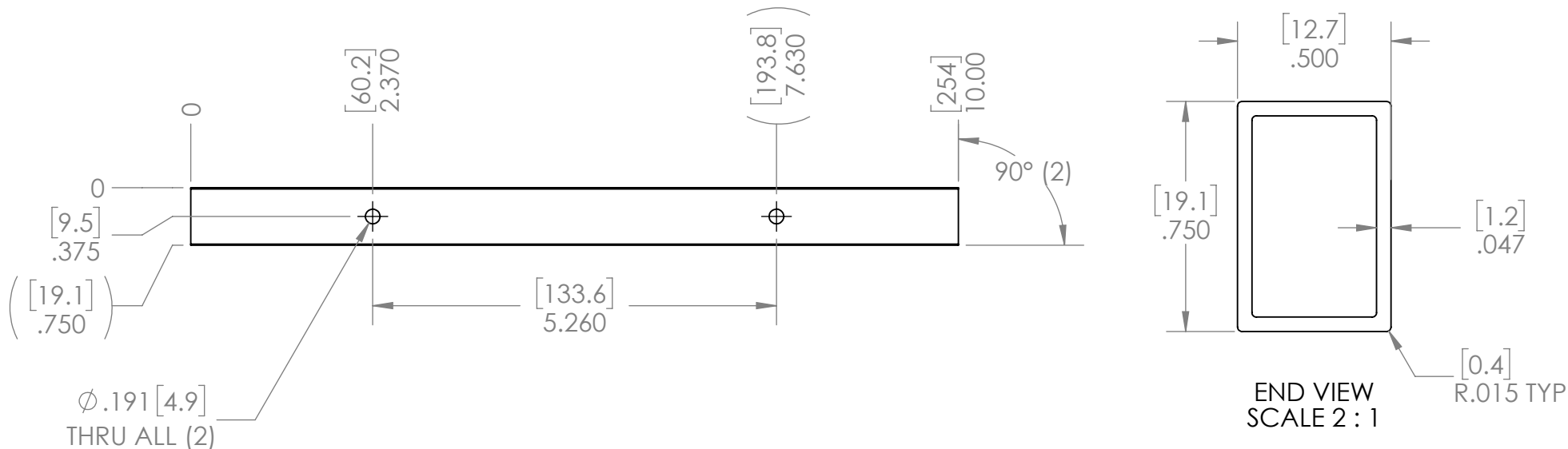
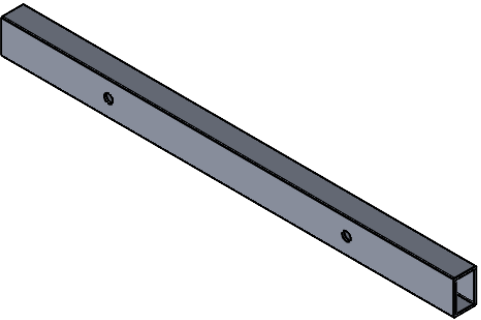



REVISION HISTORY			
REV.	DESCRIPTION	DATE	DRAWN BY
1	ORIGINAL PRINT	5/20/2015	P. YEUNG
2	INCREASED LENGTH, DECREASED HOLE COUNT	1/8/2017	N. LAWRENCE
3	DRAWN TO MEET AMDS-1	5/29/2018	A. SHORES
4	CHANGED EXTRUSION DIMENSIONS TO REFERENCE	6/18/2021	E. SCIME
5	UPDATED EXTRUSION DIMENSION TOLERANCES	8/10/2021	N. LAWRENCE
6	REMOVED EXTRUSION REFERENCE, ADDED METRIC DIMS	5/19/2023	N. MASSOUDA
7	UPDATED TOLERANCE AND MATERIAL	5/19/2023	N. MASSOUDA



*** SEE CAD FOR ADDITIONAL TOOLPATH INFO***



UNLESS OTHERWISE SPECIFIED:		COMMENTS:			
DIMENSIONS ARE IN INCHES		DUAL DIMENSIONS ARE IN MILLIMETERS.			
TOLERANCES:		BREAK ALL SHARP EDGES		TITLE:	
FRACTIONAL	±1/16			FTC FIELD LINK	
ANGULAR: MACH	±1°			SIZE DWG. NO.	
ANGULAR: BEND	±5°			A am-2580a	
ONE PLACE DECIMAL	±0.1			REV	
TWO PLACE DECIMAL	±0.01			7	
THREE PLACE DECIMAL	±0.005			SCALE: 1:4 WEIGHT: SHEET 1 OF 1	
FOUR PLACE DECIMAL	±0.0005				
MATERIAL		NAME	DATE		
6061-T6 ALUMINUM		CHECKED	PY	5/19/23	
FINISH		ENG APPR.			
DEBURRED		MFG APPR.			
DO NOT SCALE DRAWING		Q.A.			