

4

3

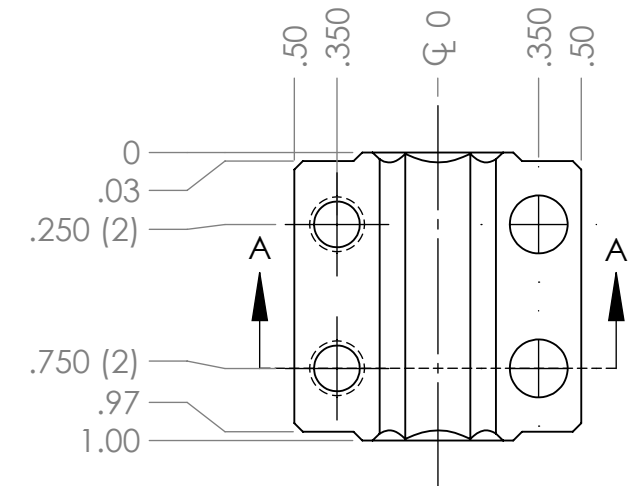
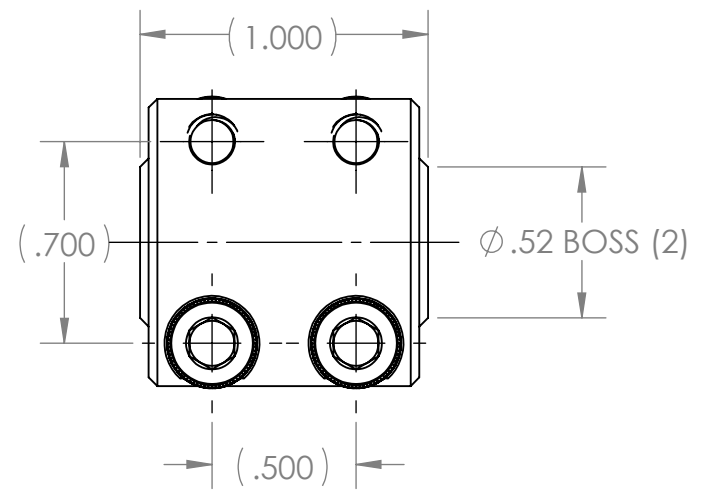
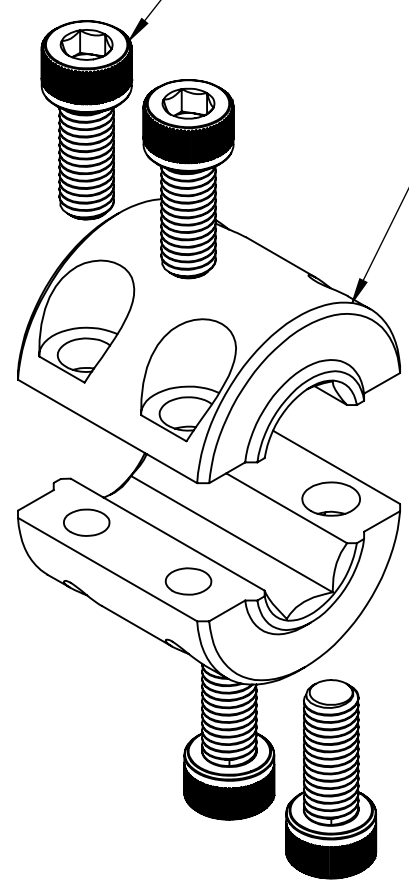
2

1

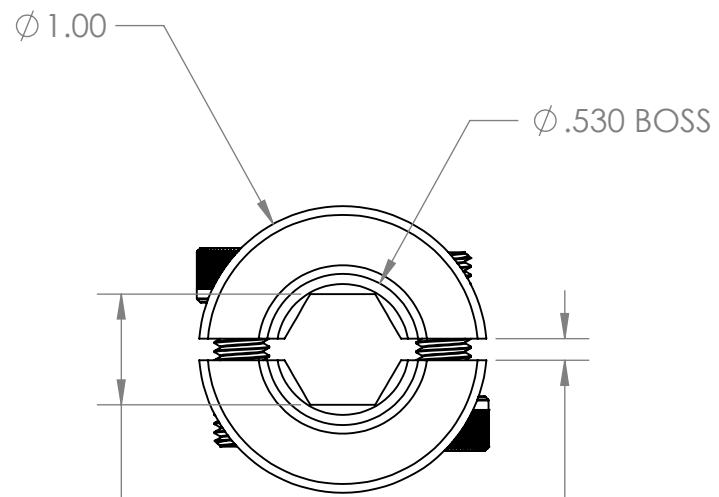
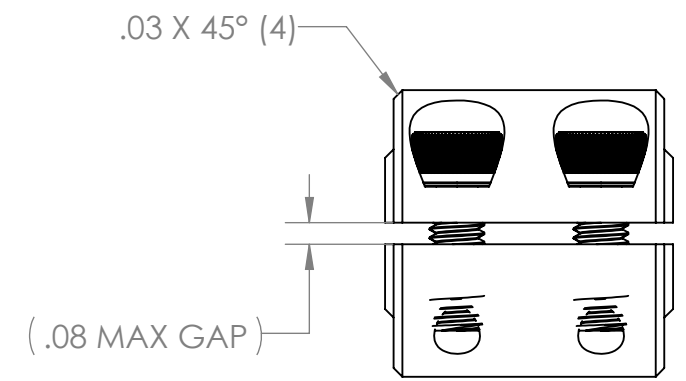
REVISION HISTORY			
REV.	DESCRIPTION	DATE	DRAWN BY
1	ORIGINAL PRINT	10/16/2023	P. YEUNG

QTY 4: 10-32 X 0.50" SHCS  
BLACK OXIDE

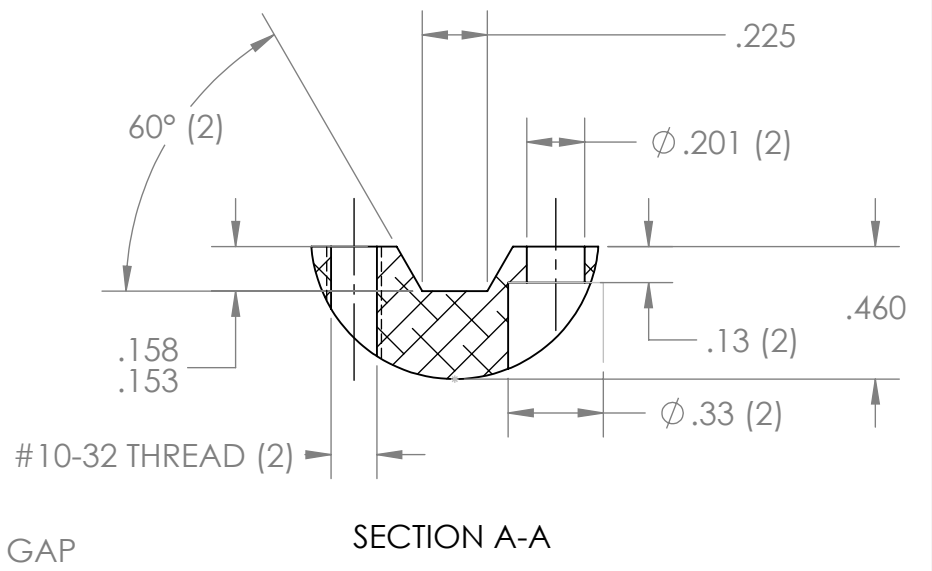
QTY 2: 375 HEX  
COUPLER HALF



375 HEX COUPLER HALF

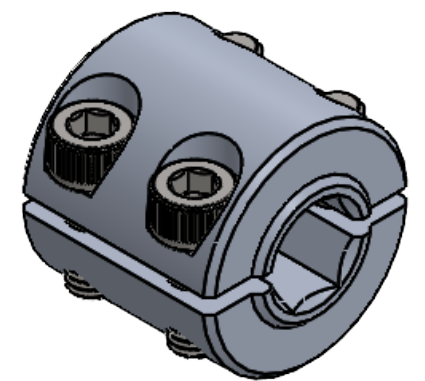


(.390  
.380 HEX THRU  
TIMED AS SHOWN)



SECTION A-A

\*\*\* SEE CAD FOR ADDITIONAL TOOLPATH INFO\*\*\*



4

3

2

1

UNLESS OTHERWISE SPECIFIED:		COMMENTS:				
<b>DIMENSIONS ARE IN INCHES</b>		DUAL DIMENSIONS ARE IN MILLIMETERS.				
TOLERANCES:		BREAK ALL SHARP EDGES.		TITLE: <b>375HEX HD SHAFT COUPLER</b>		
FRACTIONAL	±1/16	CHECKED	NAME	DATE	SIZE	DWG. NO.
ANGULAR: MACH	±1°	ENG APPR.	NM	10/17/23	<b>B</b>	<b>am-1716</b>
ANGULAR: BEND	±5°	MFG APPR.			SCALE: 1.5:1	REV <b>1</b>
ONE PLACE DECIMAL	±0.1	Q.A.			SHEET 1 OF 1	
TWO PLACE DECIMAL	±0.01					
THREE PLACE DECIMAL	±0.005					
FOUR PLACE DECIMAL	±0.0005					
MATERIAL	6061-T6 AL BODY ALLOY STEEL SCREW					
FINISH	DEBURRED					
DO NOT SCALE DRAWING						