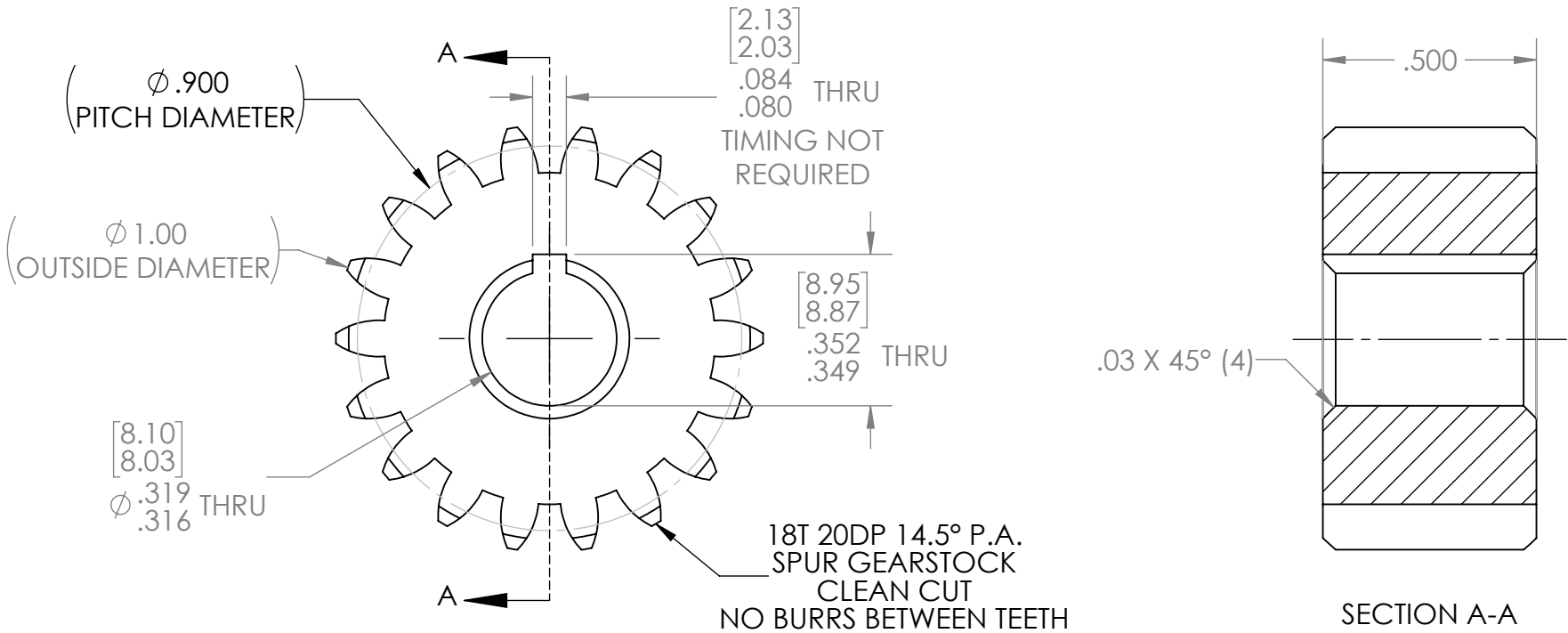
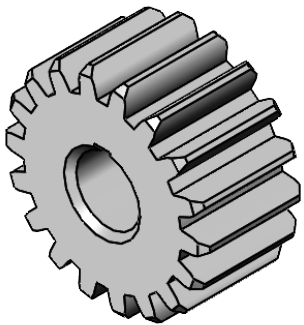



REVISION HISTORY			
REV.	DESCRIPTION	DATE	DRAWN BY
1	ORIGINAL PRINT	02/06/2023	B. HEININGER



*** SEE CAD FOR ADDITIONAL TOOLPATH INFO***



UNLESS OTHERWISE SPECIFIED:		COMMENTS:			
DIMENSIONS ARE IN INCHES		DUAL DIMENSIONS ARE IN MILLIMETERS.			
TOLERANCES: FRACTIONAL ±1/16 ANGULAR: MACH ±1° ANGULAR: BEND ±5° ONE PLACE DECIMAL ±0.1 TWO PLACE DECIMAL ±0.01 THREE PLACE DECIMAL ±0.005 FOUR PLACE DECIMAL ±0.0005		BREAK ALL SHARP EDGES.		TITLE: 18T 20DP 14.5PA 8mm KEY BORE GEAR	
MATERIAL	4140 STEEL	CHECKED	NAME NM	DATE 02/16/23	SIZE A
FINISH	DEBURRED ZINC PLATED	ENG APPR.			DWG. NO. am-4480
DO NOT SCALE DRAWING		MFG APPR.			REV 1
		Q.A.			SCALE: 2.5:1
					SHEET 1 OF 1