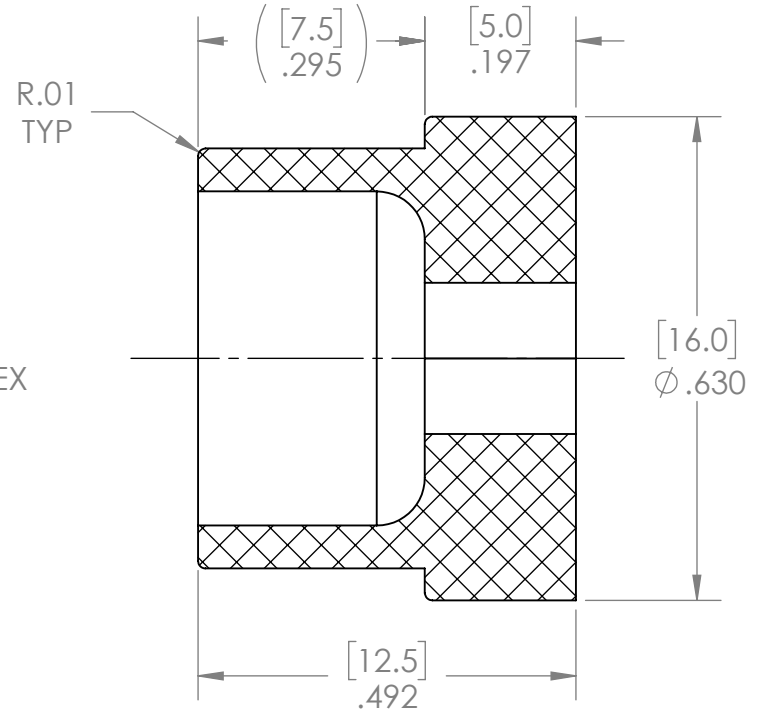
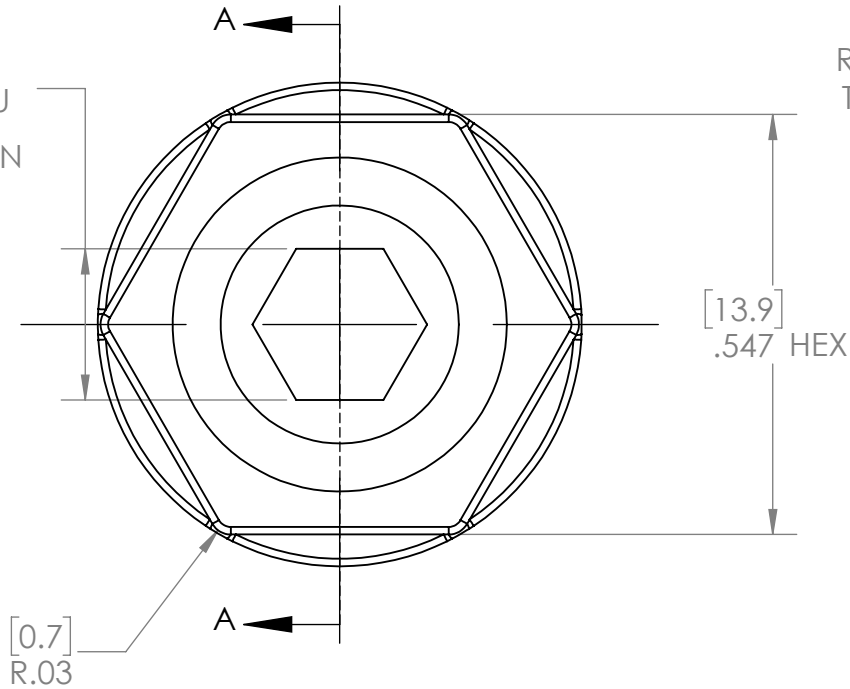



REVISION HISTORY			
REV.	DESCRIPTION	DATE	DRAWN BY
1	ORIGINAL PRINT	5/19/2022	T. JORGENSEN

[5.08]
[5.03]
.200 HEX THRU
.198
TIMED AS SHOWN



SECTION A-A

*** SEE CAD FOR ADDITIONAL TOOLPATH INFO***

UNLESS OTHERWISE SPECIFIED:		COMMENTS:					
DIMENSIONS ARE IN INCHES		DUAL DIMENSIONS ARE IN MILLIMETERS.					
TOLERANCES: FRACTIONAL ±1/16 ANGULAR: MACH ±1° ANGULAR: BEND ±5° ONE PLACE DECIMAL ±0.1 TWO PLACE DECIMAL ±0.01 THREE PLACE DECIMAL ±0.005 FOUR PLACE DECIMAL ±0.0005		BREAK ALL SHARP EDGES.		TITLE: 14mm HEX TO 5mm HEX ADAPTER			
MATERIAL ACETAL		CHECKED	NAME NL	DATE 5/23/22	SIZE A	DWG. NO. am-3909	REV 1
FINISH DEBURRED		MFG APPR.		SCALE: 4:1			SHEET 1 OF 1
DO NOT SCALE DRAWING		Q.A.					

