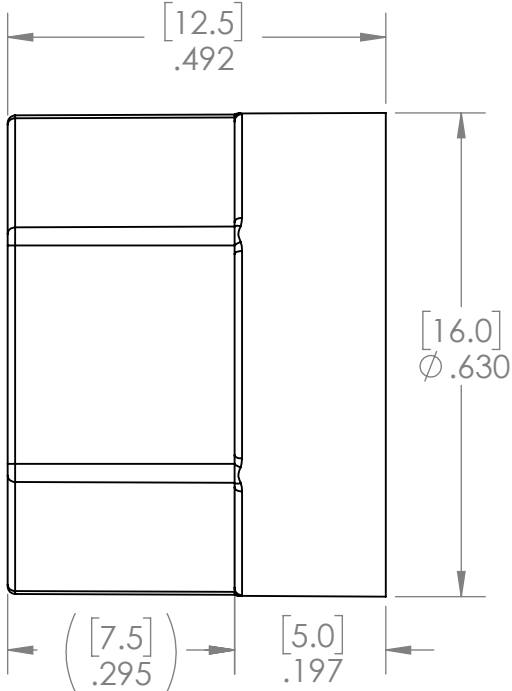
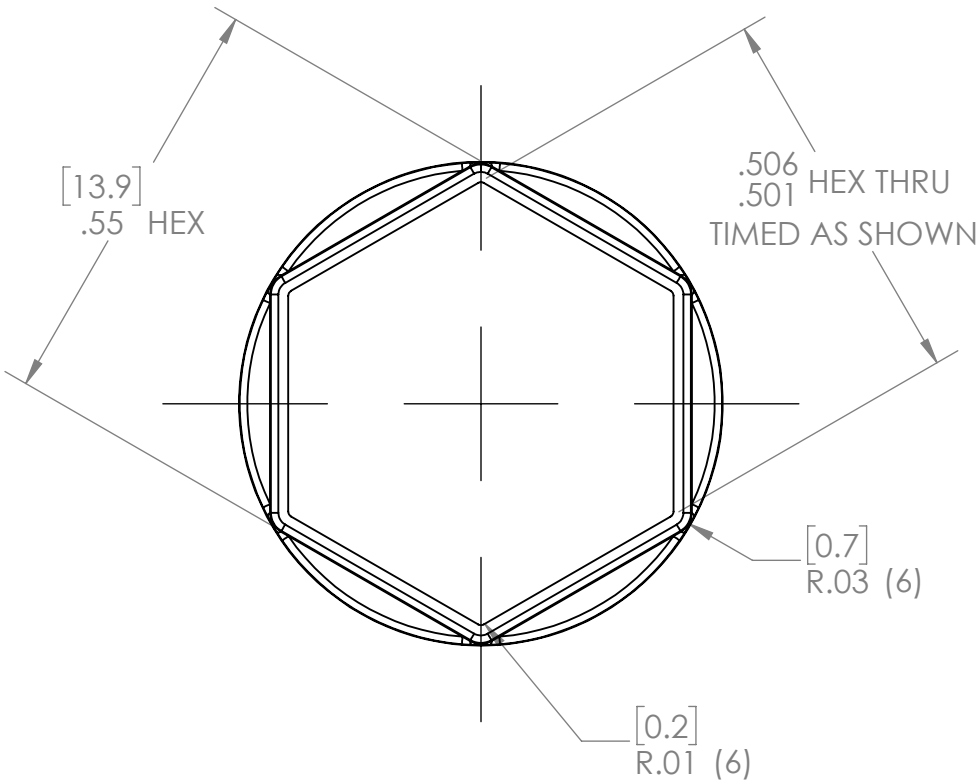
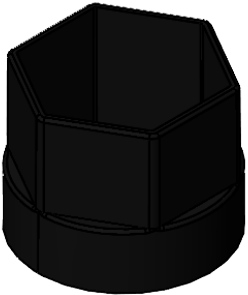



REVISION HISTORY			
REV.	DESCRIPTION	DATE	DRAWN BY
1	ORIGINAL PRINT	9/10/2018	N.MASSOUDA
2	REFERENCE DIMENSION ADDED TO HEX BOSS	5/20/2022	T. JORGENSEN



*** SEE CAD FOR ADDITIONAL TOOLPATH INFO***



UNLESS OTHERWISE SPECIFIED:		COMMENTS:					
DIMENSIONS ARE IN INCHES		DUAL DIMENSIONS ARE IN MILLIMETERS.					
TOLERANCES: FRACTIONAL $\pm 1/16$ ANGULAR: MACH $\pm 1^\circ$ ANGULAR: BEND $\pm 5^\circ$ ONE PLACE DECIMAL ± 0.1 TWO PLACE DECIMAL ± 0.01 THREE PLACE DECIMAL ± 0.005 FOUR PLACE DECIMAL ± 0.0005		BREAK ALL SHARP EDGES			TITLE: 14mm HEX TO 500IN HEX ADAPTER		
MATERIAL ACETAL		CHECKED	NAME NL	DATE 5/23/22	SIZE A	DWG. NO. am-3904	REV 2
FINISH DEBURRED		ENG APPR.			SCALE: 4:1		
DO NOT SCALE DRAWING		MFG APPR.			WEIGHT:		SHEET 1 OF 1
Q.A.							