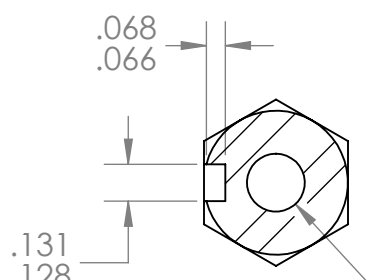
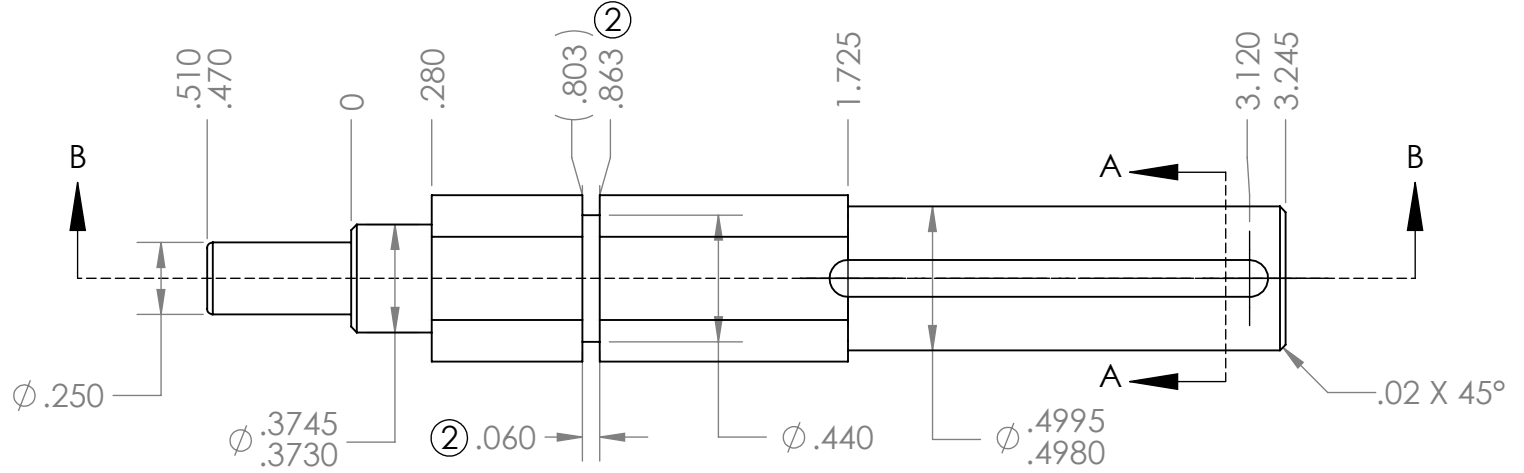
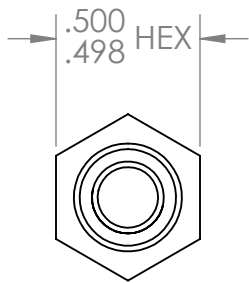
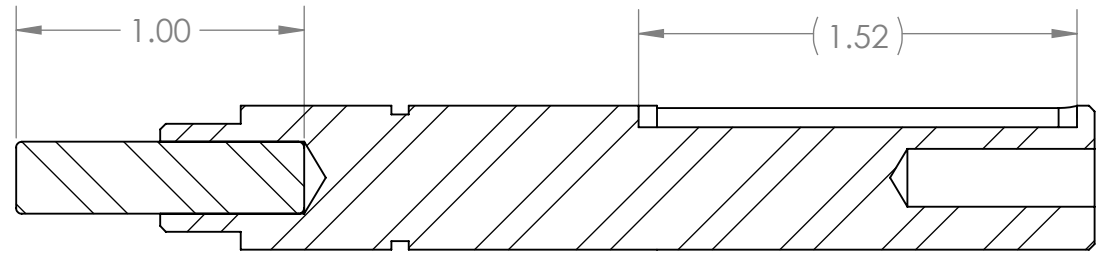


REVISION HISTORY			
REV.	DESCRIPTION	DATE	DRAWN BY
1	ORIGINAL PRINT	5/9/2018	N. LAWRENCE
2	DRAWN TO MEET AMDS-1, KEY SEAT UPDATED, E-CLIP GROOVE UPDATED	7/3/2018	A. SHORES

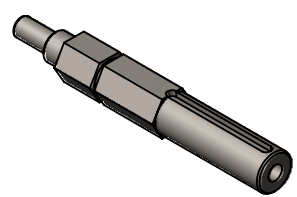


SECTION A-A  
 $\phi .201 \nabla .650$   
 1/4-20 UNC  $\nabla .500$   
 FROM END OF SHAFT



SECTION B-B

\*\*\* SEE CAD FOR ADDITIONAL TOOLPATH INFO\*\*\*



UNLESS OTHERWISE SPECIFIED:		COMMENTS:					
<b>DIMENSIONS ARE IN INCHES</b>		DUAL DIMENSIONS ARE IN MILLIMETERS.					
TOLERANCES: FRACTIONAL $\pm 1/16$ ANGULAR: MACH $\pm 1^\circ$ ANGULAR: BEND $\pm 5^\circ$ ONE PLACE DECIMAL $\pm 0.1$ TWO PLACE DECIMAL $\pm 0.01$ THREE PLACE DECIMAL $\pm 0.005$ FOUR PLACE DECIMAL $\pm 0.0005$		BREAK ALL SHARP EDGES.		TITLE: TOUGHBOX 500IN KEY OUTPUT SHAFT			
MATERIAL 4140 STEEL		CHECKED	NAME NL	DATE 8/14/18	SIZE <b>A</b>	DWG. NO. am-0506a	REV 2
FINISH ZINC PLATED		ENG APPR.		SCALE: 1.5:1		SHEET 1 OF 1	
DO NOT SCALE DRAWING		MFG APPR.					
		Q.A.					