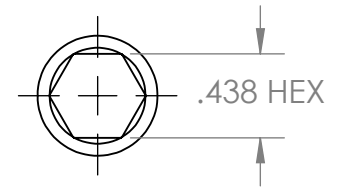
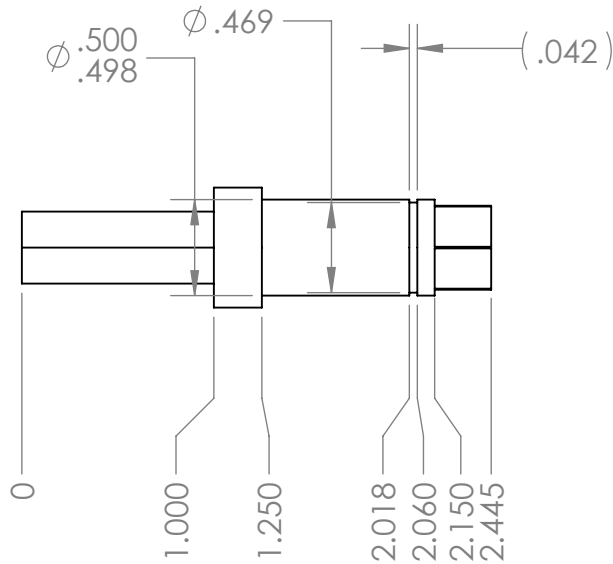
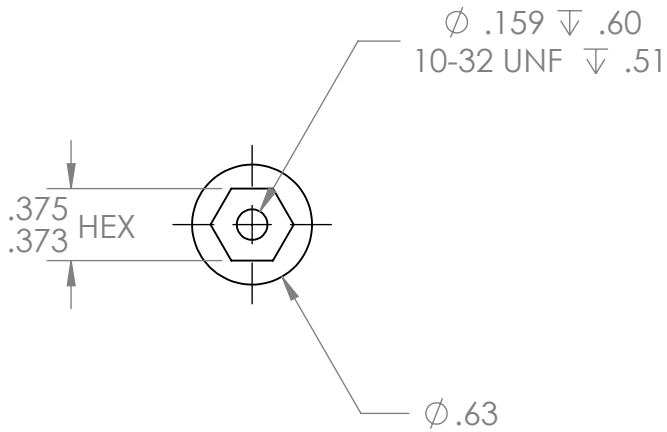
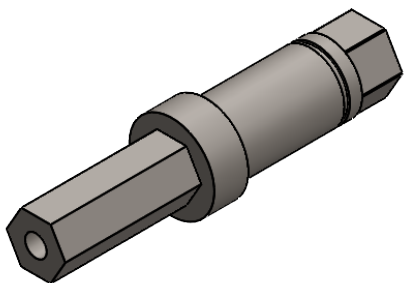



REVISION HISTORY			
REV.	DESCRIPTION	DATE	DRAWN BY
1	ORIGINAL PRINT	6/25/2024	P. ZANG
2	INCREASED THREAD TAP DEPTH	12/6/2024	P. YEUNG



*** SEE CAD FOR ADDITIONAL TOOLPATH INFO***



UNLESS OTHERWISE SPECIFIED:		COMMENTS:		 TITLE: 0.375IN HEX 1IN LONG SPORT OUTPUT SHAFT		
DIMENSIONS ARE IN INCHES		DUAL DIMENSIONS ARE IN MILLIMETERS.				
TOLERANCES: FRACTIONAL $\pm 1/16$ ANGULAR: MACH $\pm 1^\circ$ ANGULAR: BEND $\pm 5^\circ$ ONE PLACE DECIMAL ± 0.1 TWO PLACE DECIMAL ± 0.01 THREE PLACE DECIMAL ± 0.005 FOUR PLACE DECIMAL ± 0.0005		BREAK ALL SHARP EDGES		SIZE DWG. NO. REV A am-5488-0100 2		
MATERIAL 303 SS		CHECKED	NAME NM	DATE 12/6/24	SCALE: 1:1 WEIGHT: SHEET 1 OF 1	
FINISH DEBURRED		ENG APPR.	MFG APPR.			
DO NOT SCALE DRAWING		Q.A.				