

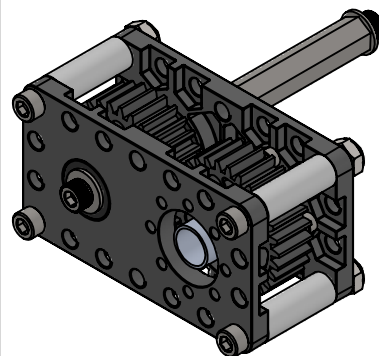
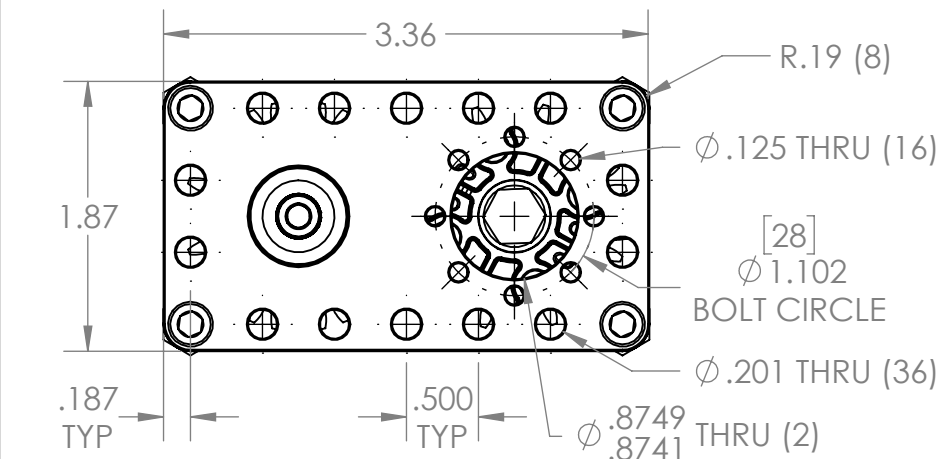
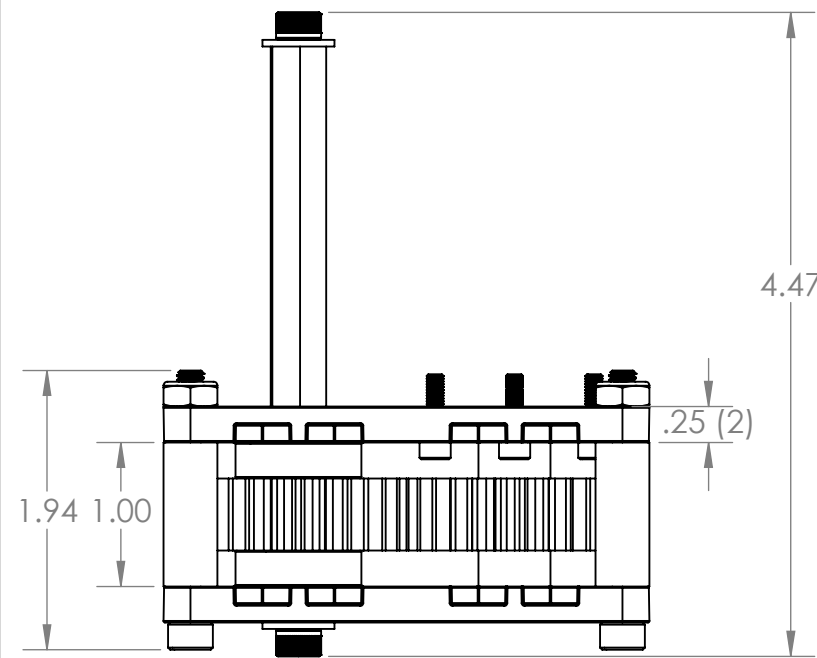
4

3

2

1

REVISION HISTORY			
REV.	DESCRIPTION	DATE	DRAWN BY
1	ORIGINAL PRINT	8/24/2023	J. DOMINIACK
2	CHANGED SPACER HARDWARE	3/5/2025	P. YEUNG



4

QTY 4: 0.375 OD x 1.00 NYLON SPACER (am-1696)

QTY 1: ROBOTS 0.375IN x 4.00 LONG HEX SHAFT (am-5003-0400)

QTY 4: 10-32 x 1.75" SHCS (am-1048)

QTY 2: 30 TOOTH 375IN HEX BORE GEAR (am-5020_30)

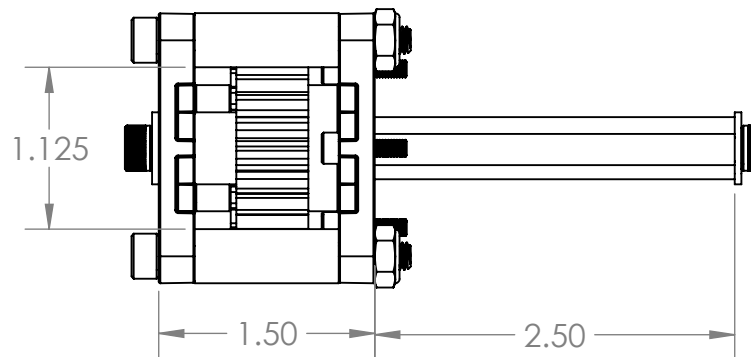
QTY 2: 0.500 OD x 0.250 ALUMINUM SPACER (am-1698)

QTY 2: 10-32 x 0.50" SHCS (am-1002)

QTY 2: MOTION BUSHING FOR 375IN HEX (am-5021)

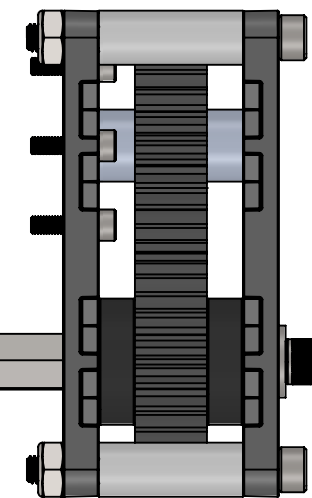
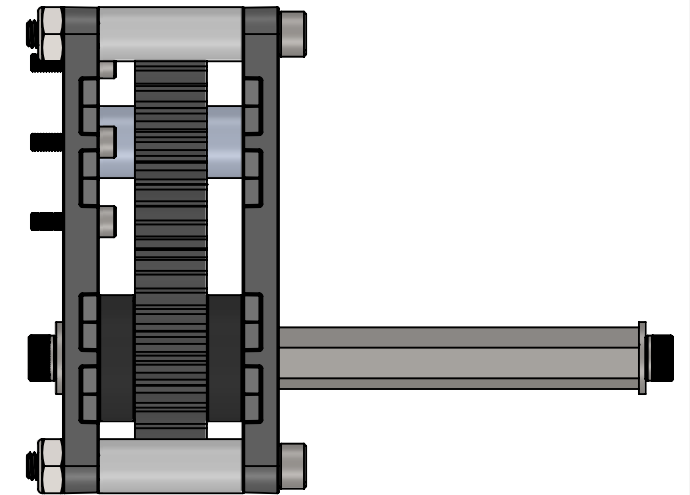
QTY 2: #10 STEEL WASHER (am-1026)

QTY 4: M3-0.5 x 12mm SHCS (am-1706)



3

OPPOSITE MOTOR CONFIGURATION



UNDER MOTOR CONFIGURATION

B

A

*** SEE CAD FOR ADDITIONAL TOOLPATH INFO***

UNLESS OTHERWISE SPECIFIED:		COMMENTS:	
DIMENSIONS ARE IN INCHES		DUAL DIMENSIONS ARE IN MILLIMETERS.	
TOLERANCES:		BREAK ALL SHARP EDGES.	
FRACTIONAL	±1/16		
ANGULAR: MACH	±1°		
ANGULAR: BEND	±5°		
ONE PLACE DECIMAL	±0.1		
TWO PLACE DECIMAL	±0.01		
THREE PLACE DECIMAL	±0.005		
FOUR PLACE DECIMAL	±0.0005		
MATERIAL	GRAY POLYCARBONATE NYLON STEEL HARWARE	NAME	DATE
FINISH	DEBURRED	NM	3/6/25
DO NOT SCALE DRAWING		Q.A.	
		TITLE: ROBOTS PASS THROUGH GEARBOX	
SIZE	DWG. NO.	REV	
B	am-5029	2	
SCALE: 3:4		SHEET 1 OF 1	

2

1